

WYNDHAM GRAND[®]

Orlando Resort Bonnet Creek

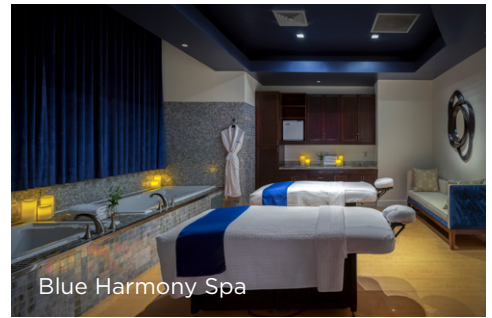
GRAND MEETINGS AND EVENTS





INSPIRE, CONNECT AND IMAGINE

The AAA Four Diamond Wyndham Grand Orlando Resort Bonnet Creek is the ideal destination for meetings, corporate functions, conferences, training sessions, executive dinners and more, with 50,000 square feet of flexible indoor and outdoor meeting and event space. From elegantly appointed ballrooms and meeting venues, to customizable menus, you'll find attentive and professional services, and a smart selection of business-minded amenities. As a *Walt Disney World*® Gateway Hotel, we offer groups unique benefits, like customized event venues, and special attendee Theme Park tickets.



Blue Harmony Spa



Pool Deck

ACCOMMODATIONS

The resort features 400 upscale accommodations comprised of King, Double Queen, Family Bunk Bedded rooms and 12 suites.

WALT DISNEY WORLD® RESORT GOLF COURSES

With 63 spectacular holes of golf and 477 acres of lush, tree-lined fairways, the *Walt Disney World*® Resort, in partnership with the Arnold Palmer Golf Management, is one of the top golfing destinations in the country. Play on one of Disney's three 18-hole, par-72 championship golf courses or test your swing on the 9-hole walking course.

SPLASH

POOLS | LAZY RIVERS | RECREATION

Spread over an oasis of more than 62 acres, the resort offers an abundance of opportunities to enjoy under the sun, in the water, and away from the ordinary. Scenic walking and jogging paths meander throughout the lushly landscaped resort and around a free-form, 10-acre lake. Gathering spots with Adirondack chairs and fire pits are perfect for anytime relaxation and ideal for firework gazing.

With access to five pools, two lazy rivers and eight hot tubs – not to mention an abundance of loungers, umbrellas and private cabanas – there are countless ways to make a splash or just soak up the fun.

BLUE HARMONY SPA

Our premier spa facilities include indoor and outdoor treatment rooms, a relaxation lounge, an outdoor spa garden, an outdoor hot tub, full-amenity changing suites with steam rooms, a couple's suite with side-by-side soak tubs, and a top of the line fitness center. The Blue Harmony Spa offers half-and full-day spa packages, as well as customized programs for groups that will leave guests relaxed, restored, and renewed.

MULTIPLE DINING OPTIONS

BARISTA

Kick start your morning or refuel between meetings, at The Barista, perfect for “grab & go” offerings such as Starbucks coffee and teas, breakfast sandwiches, pizza, ice cream and more.

TESORO COVE

Start your day right with a hearty breakfast or simple morning delights. The breakfast buffet features a hot, fresh line-up of favorites such as an omelet station, made-to-order Belgium waffles, and charcuterie options.

BACK BAY BAR AND GRILL

Take refuge from a meeting or the sun, at Back Bay Bar & Grill, overlooking the resort's picturesque 10-acre lake, serving breathtaking views along with a satisfying selection of casual sports bar fare and drinks.

BAR 1521 & SUSHI

A popular gathering spot for enjoying an impressive selection of hand-crafted cocktails, beer, sake, and wines by the glass. Bar 1521 offers a menu including the signature Blu Crab Mac & Cheese and Baja Fish Tacos. Enjoy freshly made sushi with more than a dozen traditional and signature rolls to choose from.

DEEP BLU SEAFOOD GRILLE

The award-winning deep blu Seafood Grille invites guests to enjoy a creative menu from the sea and shore, with hand-crafted cocktails and an extensive wine list. Signature dishes include deep blu Crab Cake, and Lobster Linguine. A raw bar is also available, serving the freshest of Ceviche, Oysters and more. Vegan and vegetarian options are also available.

ORLANDO HIGHLIGHTS

A world-renowned destination for meetings, Orlando is the place to make all of your planning dreams come true. Of course, it is beloved for its theme parks: *Walt Disney World*®, Universal Studios Florida, SeaWorld Orlando and many others. Orlando beckons with year-round golf and some of the most enticing dining options on the planet.

Central Florida is becoming more known for its numerous walkable shopping, dining and entertainment districts — places that celebrate public art and take pride in offering a myriad of cultural opportunities. Come to Orlando — and bring your attendees — where you can wish upon a star!

ATTRACTIONS

Disney's Hollywood Studios® — 2.9 miles
EPCOT® — 4.7 miles
Disney's Animal Kingdom® Theme Park — 5.5 miles
Magic Kingdom® Park — 6.6 miles

ENTERTAINMENT

Disney Springs® Area — 3.1 miles
Pointe Orlando — 10.6 miles
Universal Citywalk — 13 miles
Camping World Stadium — 18.9 miles
Dr. Phillips Center for the Performing Arts — 19.8 miles
Bob Carr Performance Art Centre — 20.4 miles

SHOPPING

Orlando Vineland Premium Outlets — 6 miles
The Mall at Millenia — 14.6 miles
The Shops at Park Avenue Winter Park — 24.4 miles
Disney Springs® Area

RESTAURANTS

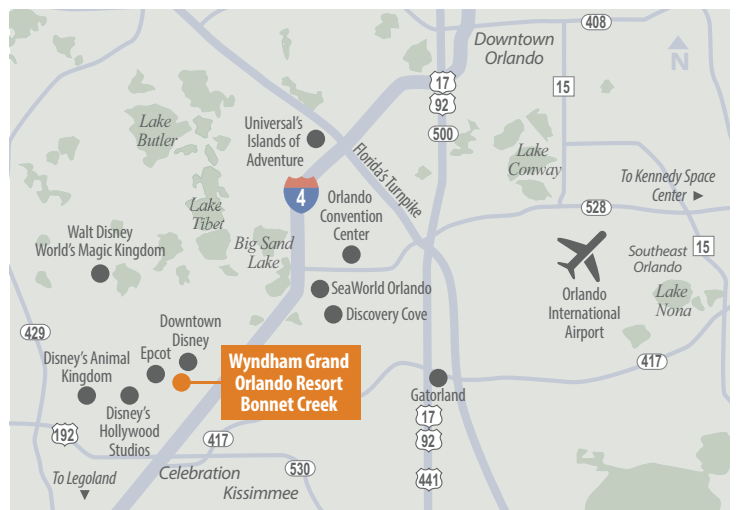
Disney Springs® Area — 3.1 miles
Pointe Orlando — 10.6 miles
Orlando's Restaurant Row (Sand Lake Road) — 11.2 miles

AIRPORTS

Orlando International Airport — 20.7 miles
Orlando Sanford International Airport — 42 miles

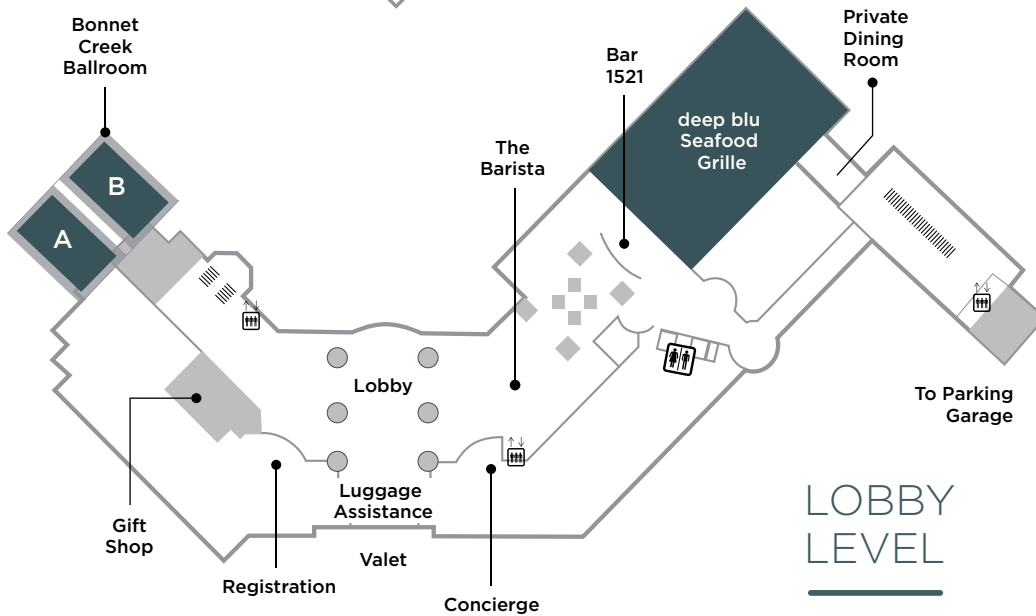
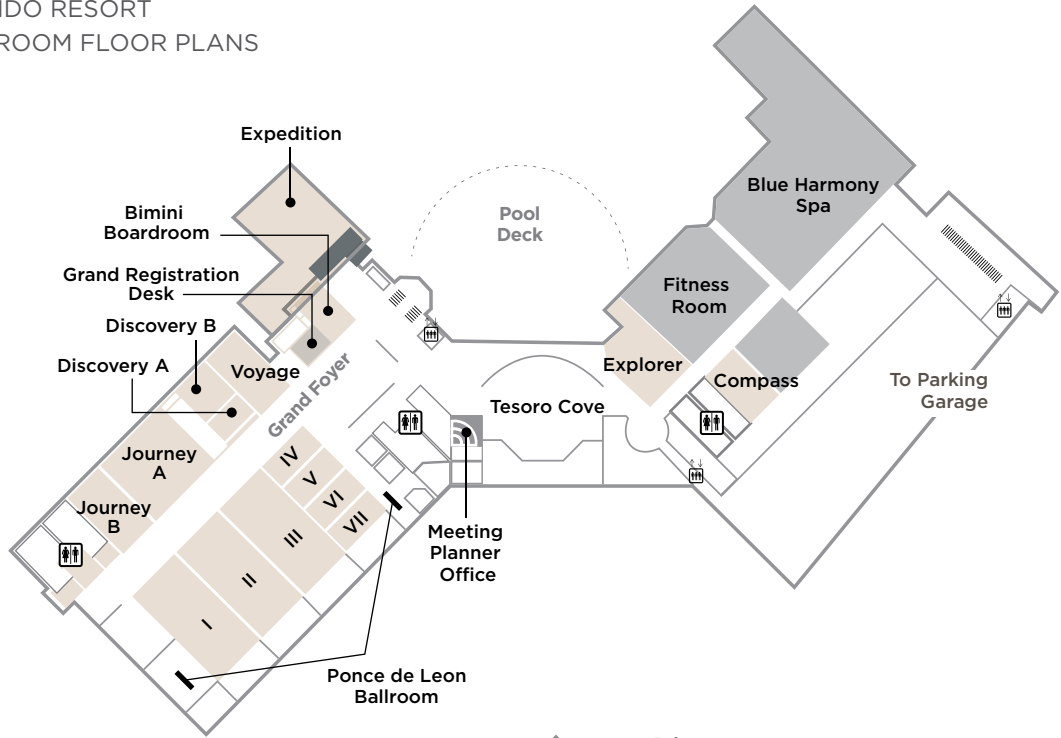
 **WYNDHAM GRAND**
Orlando Resort Bonnet Creek

14651 Chelonia Parkway | Orlando FL, 32821
407-390-2480 | www.wyndhamgrandorlando.com



WYNDHAM GRAND ORLANDO RESORT
 BONNET CREEK MEETING ROOM FLOOR PLANS

LOWER LEVEL

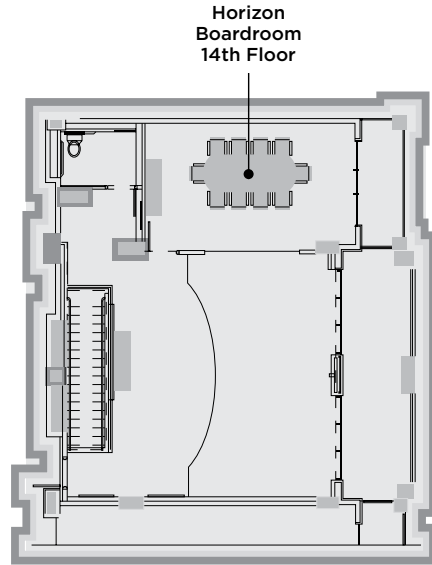
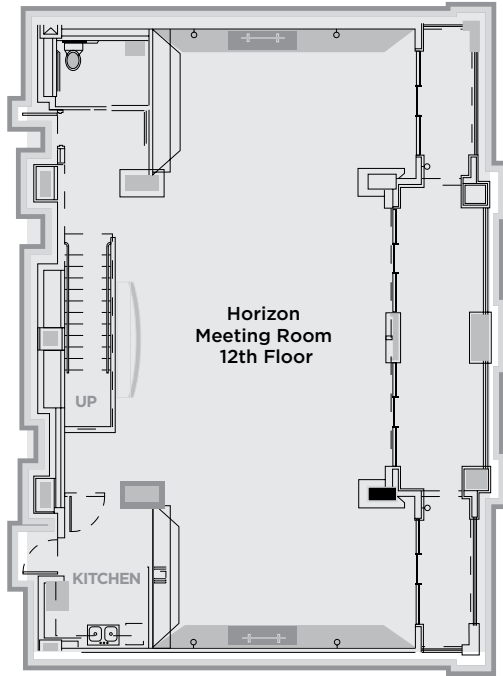


LOBBY LEVEL

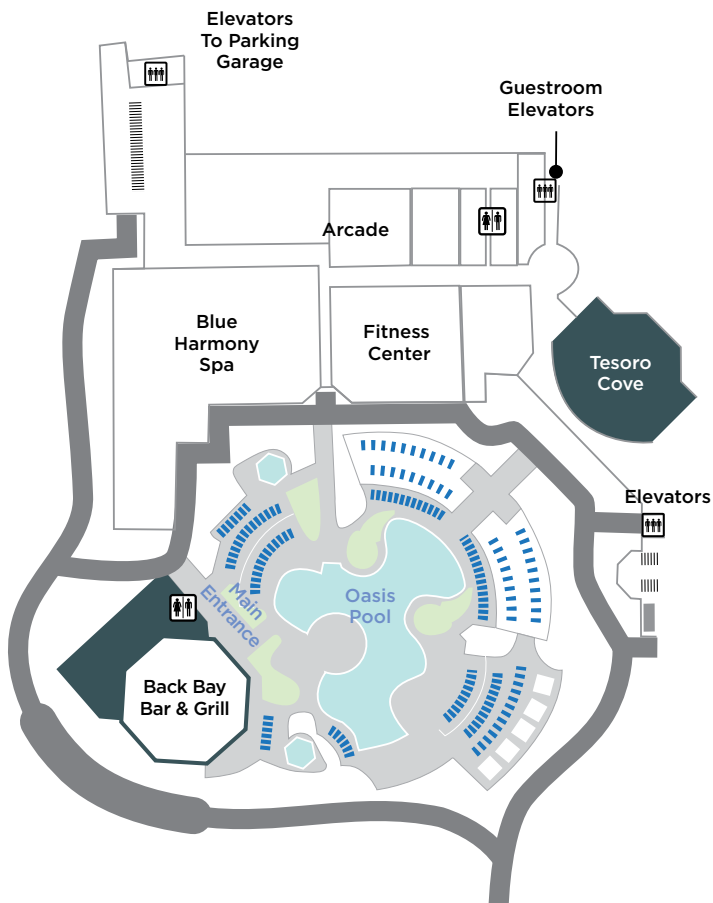


BONNET CREEK BALLROOM

Designed for meetings, galas and special events, the Bonnet Creek Ballroom, with its floor to ceiling windows, has a wraparound balcony offering views of our 10-acre lake and oasis pool. Ballroom accents include state of the art lighting and crystal chandeliers — with the ability to set the tone for your event through the use of the color spectrum.



HORIZON
MEETING
ROOM



POOL
DECK

LOWER LEVEL

Ground Level	Square Feet	Dimensions	Banquet Rounds of 10	Reception	Classroom	Theatre	Conference	Hollow Square	U-Shape
Ponce de Leon Ballroom	7950	122' x 62'	450	600	340	650			
Ponce de Leon I	1910	31' x 62'	100	150	100	200	55	50	45
Ponce de Leon II	1910	31' x 62'	100	150	100	200	55	50	45
Ponce de Leon III	1910	31' x 62'	100	150	100	200	55	50	45
Ponce de Leon IV	420	15' x 28'	20	40	20	35	20	16	14
Ponce de Leon V	420	15' x 28'	20	40	20	35	20	16	14
Ponce de Leon VI	436	16' x 28'	20	40	20	35	20	16	14
Ponce de Leon VII	436	16' x 28'	20	40	20	35	20	16	14
Ponce de Leon Foyer	2250	125' x 18'	n/a	250	n/a	n/a	n/a	n/a	n/a
Ponce de Leon Foyer I	550	31' x 18'	n/a	60	n/a	n/a	n/a	n/a	n/a
Ponce de Leon Foyer II	550	31' x 18'	n/a	60	n/a	n/a	n/a	n/a	n/a
Ponce de Leon Foyer III	550	31' x 18'	n/a	60	n/a	n/a	n/a	n/a	n/a
Ponce de Leon Foyer IV	550	31' x 18'	n/a	60	n/a	n/a	n/a	n/a	n/a
Grand Foyer	3260	83' x 42'	n/a	100	n/a	n/a	n/a	n/a	n/a
Grand Registration Desk	450	20' x 25'	n/a	n/a	n/a	n/a	n/a	n/a	n/a
Meeting Planner's Office	288	16'x18'	10	n/a	n/a	n/a	8	n/a	n/a
Journey	2419	38' x 63'	160	200	132	210	40	52	44
Journey A	1560	38' x 41'	100	130	70	140	35	32	28
Journey B	800	35' x 22'	50	70	60	60	20	24	20
Discovery	716	39' x 18'	30	60	30	60	20	24	22
Discovery A	300	18' x 17'	10	20	15	18	9	n/a	9
Discovery B	428	18' x 22'	20	40	20	35	16	12	10
Voyage	820	22' x 36'	50	80	36	80	24	24	20
Ceiling Height on all above									
Ballroom Drive	4400	24' wide	n/a	n/a	n/a	n/a	n/a	n/a	n/a
Bimini Boardroom	480	26' x 17'	n/a	n/a	n/a	n/a	14	n/a	n/a
Bimini Foyer	642	varies	30	70	n/a	n/a	n/a	n/a	n/a
Compass	487	33' x 16'	30	40	30	60	15	18	15
Tesoro Cove	4600	54' x 72'	200	300	n/a	n/a	n/a	n/a	n/a
Explorer	745	24' x 28'	50	75	40	80	20	22	20
Expedition	2115	50' X 47'	160	210	126	220	45	46	38

HORIZON MEETING ROOM

	Square Feet	Dimensions	Banquet Rounds of 10	Reception	Classroom	Theatre	Conference	Hollow Square	U-Shape
Horizon Boardroom	304	14' x 22'	n/a	n/a	n/a	n/a	10	n/a	n/a
Horizon Balcony	60	13' x 5'							
Horizon Meeting Room	1600	29' x 54'	50	80	50	100	28	32	30
Horizon Patio	300	7' x 54'	n/a	n/a	n/a	n/a	n/a	n/a	n/a
Parlor Rooms (10 Units)	407	31' x 13'	20	35	14	30	14	12	12

LOBBY LEVEL

Lobby Level	Square Feet	Dimensions	Banquet Rounds of 10	Reception	Classroom	Theatre	Conference	Hollow Square	U-Shape
deep blu Seafood Grille	6124	varies	250	350	n/a	n/a	n/a	n/a	n/a
Private Dining Area	540	24' x 25'	40	50	n/a	n/a	20	18	14
Bar 1521	4330	varies	n/a	200	n/a	n/a	n/a	n/a	n/a
Bonnet Creek Ballroom Foyer	585	15' x 39'	n/a	70	n/a	n/a	n/a	n/a	n/a
Bonnet Creek Ballroom	3500	62' x 48'	250	330	150	360	75	65	78
Bonnet Creek Ballroom A	1550	24' x 50'	110	145	68	160	35	30	38
Bonnet Creek Ballroom B	1950	48' x 38'	140	185	82	200	40	35	40
Bonnet Creek Terrace	923	88.75' x 10.4'	n/a	100	n/a	n/a	n/a	n/a	n/a

POOL DECK

Outdoor Event Space	Square Feet	Dimensions	Banquet Rounds of 10	Reception	Classroom	Theatre	Conference	Hollow Square	U-Shape
Upper Lower Combo	2528	varies	125	225	n/a	250	n/a	n/a	n/a
Upper Pool Deck	1347	varies	75	125	n/a	n/a	n/a	n/a	n/a
Lower Pool Deck	1181	varies	75	125	n/a	n/a	n/a	n/a	n/a
Tesoro Common A	938	19.25' x 48.75'	50	85	n/a	n/a	n/a	n/a	n/a
Tesoro Commons B	774	42' x 18.5'	50	85	n/a	n/a	n/a	n/a	n/a

*These are max numbers that do not contain any AV or staging. Classroom sets are 3 per 6ft'.

Please know this is just an estimate of the room capacities. Once all is final, these dimensions may go up or down, based on doorways/walls/etc.

