



Department Directory

Accounting: Payables

Contact: Joylene Brooks;
joylene.brooks@wardsmarine.com
Fort Lauderdale (954) 523-2815,
ext. 103

Accounting: Receivables

Contact: Julie Roglyn;
julie.roglyn@wardsmarine.com
Fort Lauderdale (954) 523-2815,
ext. 102

Contracts Administration

The Contracts Administration office works with other departments to help identify sources of new business, evalu-

ate solicitations and prepare proposals for Government, commercial, and large recreational projects.

Contact: Geoff Parkins – Manager;
geoff.parkins@wardsmarine.com
Fort Lauderdale (954) 523-2815,
ext. 140

Engineering

Design vessel electrical systems and switchgear systems (switchboards) either for a custom new build, refit or retrofit of existing equipment. Provide classification submittals for the various classification societies including ABS, Lloyd's, RINA, DNV etc.

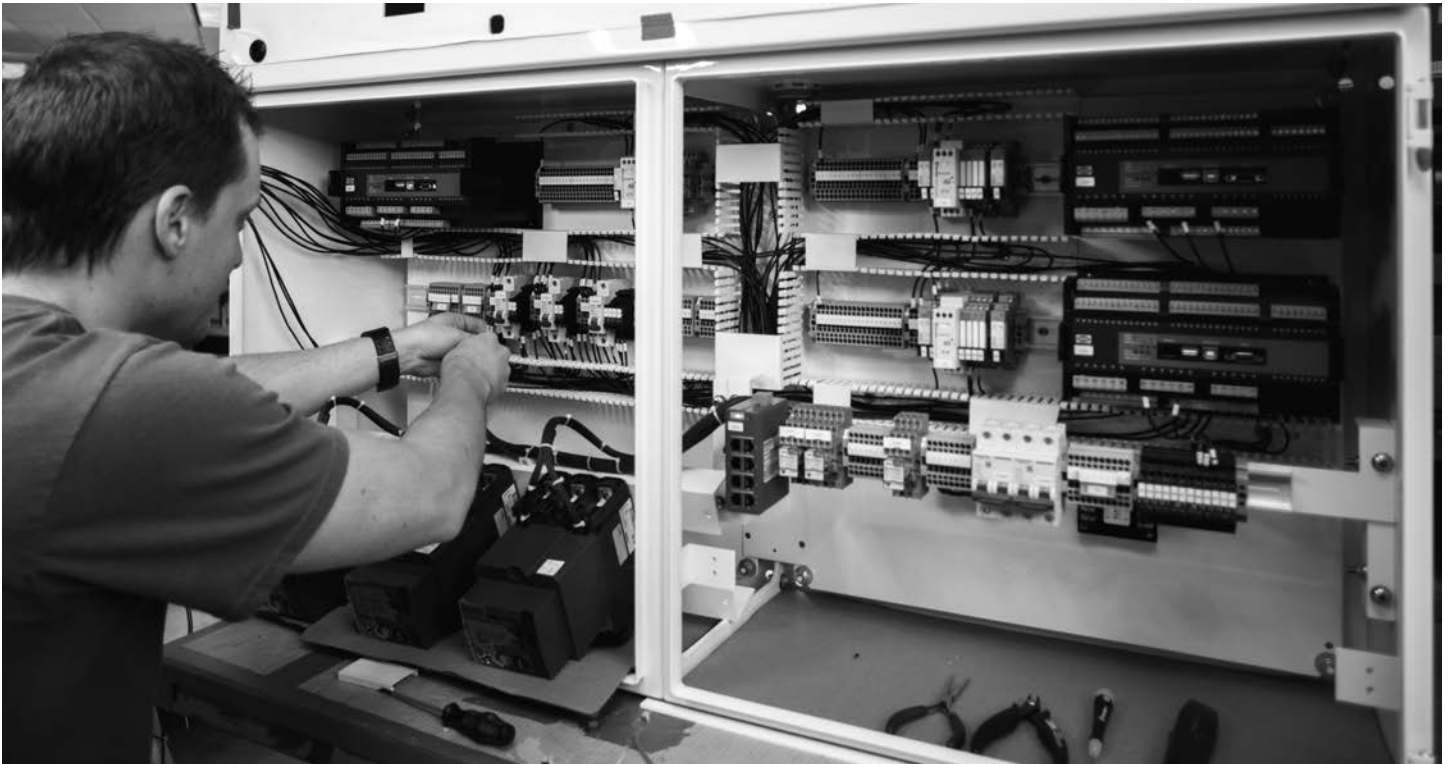
Contact: John McKay – Manager;
john.mckay@wardsmarine.com
Fort Lauderdale (954) 523-2815,
ext. 115

Inside Services

Testing diagnostics and repairs of battery chargers, inverters, converters, motor controls, shore power cords and adapters. Custom engraving of panel boards including helm console, alarm, vessel profile, main distribution and control panels. Two in-house paint booths to accommodate any specification and match current products and panels installed on the vessel. Manufacturing of all WME Switchgear products, distribution panels, shore cords and adapters.

Contact: Steve Treaster – Manager
steve.treaster@wardsmarine.com
Fort Lauderdale (954) 523-2815,
ext. 109





Programming and Systems Engineering

Design and development of Power Management Systems (PMS) for control over generator load sharing and generator load demands.

Design and development of Touch Screen Interface (TSI) for all WME Switchgear products as well as other manufacturers' switchboards offering intuitive control, customization, 24 hour monitoring, quick reference guides, easy access to ship's manuals, data tracking and operation log storage. Design and troubleshooting of lighting control systems and

Programmable Logic Controllers (PLC) during the new build or refit process.

Contact: Jerry Kathalynas;
jerry.kathalynas@wardsmarine.com
Fort Lauderdale (954) 523-2815, ext. 300

Geoff Parkins;
geoff.parkins@wardsmarine.com
Fort Lauderdale (954) 523-2815, ext. 140

Purchasing

Fort Lauderdale:
Willie Soles – Manager;
willie.soles@wardsmarine.com
(954) 523-2815, ext. 120

Riviera Beach:

Jason Pavone – Manager;
jason.pavone@wardsmarine.com
(561) 863-7100, ext. 201

Sales

Representatives are available to answer questions and provide customer service in both showroom locations. Our team of outside sales representatives visits local businesses, as well as others throughout the state and all across the country. In-house Business-to-Business specialists offer dedicated service to fellow marine businesses.

**Fort Lauderdale:**

Ward Eshleman III – Sales Manager;
wardy.eshleman@wardsmarine.com
(954) 523-2815, ext. 122

Riviera Beach:

Jason Pavone – Manager;
jason.pavone@wardsmarine.com
(561) 863-7100, ext. 201

Service

Fleet of American Boat and Yacht Council (ABYC) certified marine electricians providing dockside services that include refit, repair, new installations and modifications. Electrical, corrosion, lightning and pre-purchase

surveys are performed and recommended during various stages of a vessels' journey and usage. Extensive experience and technical knowledge allow for the management of large projects including new build and new design as well as forensic investigation and expert witness testimony.

Fort Lauderdale:

Luis Lopez – Manager;
luis.lopez@wardsmarine.com
(954) 523-2815, ext. 113

Richard Yasparro – Service Coordinator;
richard.yasparro@wardsmarine.com
(954) 523-2815, ext. 135

Riviera Beach:

Gregg Scrudders – Manager;
gregg.scrudders@wardsmarine.com
(561) 863-7100, ext. 203

Shipping

Domestic, International and
HAZMAT certified

Fort Lauderdale:

Matt Blake – Manager;
matt.blake@wardsmarine.com
(954) 523-2815, ext. 111

