

Hubbell Nylon

- Neoprene bushing
- UL 94-V2, type 4, 4X, 12 &13 Listed
- CSA Certified
- Temperature range -40°F (-40°C)-225°F(143°C)



Item Number	NPT	Range in "	Price
Round Straight			
SHC1023CR	1/2	.38"-.5"	\$12.00
SHC1024CR	1/2	.50"-.63"	\$12.25
SHC1035CR	3/4	.38"-.5"	\$13.25
SHC1036CR	3/4	.50"-.63"	\$13.25
SHC1037CR	3/4	.63"-.75"	\$13.25
SHC1041CR	1	.63"-.75"	\$16.50
T/B2703	1-1/4	1.080-1.280	\$39.66
T/B2707	1-1/2	1.39-1.650	\$82.19
Flat Straight			
UFC0001CR	1/2	.25-.55	\$12.38
UFC0003CR	3/4	.26"-.78"	\$13.25
90 Degree			
NHC1023CR	1/2	.38"-.5"	\$20.50
NHC1024CR	1/2	.5"-.63"	\$20.50
NHC1035CR	3/4	.38"-.50"	\$25.50
NHC1042CR	1	.75"-.88"	\$39.25

Locknuts available on page 37

Hubbell Aluminum

- -40°F(-40°C)- 300°F(149°C)
- IP66 suitability
- UL Listed and CSA Certified



Item Number	NPT	Range in "	Price
SHC1053	1-1/4	1.13"-1.25"	\$49.38
SHC1054	1-1/4	1.25"-1.38"	\$49.38
SHC1061	1-1/2	1.38"-1.50"	\$82.88
SHC1067	2	1.50"-1.63"	\$86.00
SHC1069	2	1.75"-1.88"	\$86.00
SHC1080	2-1/2	2.19"-2.31"	\$127.00

Locknuts available on page 37

Images are representative of products listed and may not be actual product.

Cable Support

CORD GRIPS

Nickel Plated Brass

- Pressure rating 5 bar, 70 psi
- Seal rings factory installed
- Temperature -30°F(-34°C) to 80°F(26.7°C)
- Insert ethylene-propylene cauthchouc
- Protection rating is IP68, NEMA 4X



NICKEL PLATED

Item Number	NPT	Range in "	Price
CG38NPB	3/8	.177-.394	\$16.39
CG12NPB	1/2	.275-.512	\$18.80
CG34NPB	3/4	.354-.669	\$26.54
CG1NPB	1	.433-.827	\$47.76
CG114NPB	1-1/4	.748-1.103	\$46.96
CG112NPB	1-1/2	1.063-1.379	\$67.28

Locknuts available on page 37

Skintop II

- Corrosion resistant dome sealing nut
- Neoprene compression gland automatically adjusts to the size of cable
- Contoured sealing ring, molded beneath the wrenchingnut, providing hermetic seal
- Protect up to 70 psi
- IP 68, 5 Bar
- Vibration proof
- Temperature -4°F(-20°C) to 176°F(80°C)
- Internationally approved UL, CSA, VDE, and SEV



NYLON

Item Number	Thread Type	Dimension Range in " or mm	Price
Gray unless otherwise noted, PG sizes include appropriate locking nut			
S1107	PG7	2.5-6.5 mm	\$2.13
S1113	PG13	6.0-12.0 mm	\$2.91
S1116	PG16	9.0-14.0 mm	\$2.40
S1121	PG21	13.0-18.0 mm	\$3.90
S1129	PG29	14.0-25.0 mm	\$7.29
S1136	PG36	24.0-32.0 mm	\$31.50
S1142	PG42	35.0-38.0 mm	\$50.17
S1148	PG48	39.0-44.0 mm	\$56.38
S1138	3/8	.138-.315 inches	\$1.59
S2138 (Black)	3/8	.138-.315 inches	\$1.80
S1112	1/2	.197-.472 inches	\$1.68
S2112 (Black)	1/2	.197-.472 inches	\$2.22
S1134	3/4	.512-.709 inches	\$4.65
S2134 (Black)	3/4	.512-.709 inches	\$3.72
S1101	1	.748-1.00 inches	\$5.64
S2101 (Black)	1	.748-1.00 inches	\$10.23

Locknuts available on page 37

List pricing in catalog is subject to change without notice.

Sealing Rings



SEALING RING

See T/B cordgrips on page 35

Item Number	NPT	Price
T/B5265	1-1/4	\$5.68
T/B5266	1-1/2	\$7.44
T/B5267	2	\$8.38

Lock Nuts

See cordgrips on pages 35-37

Item Number	NPT	Price
Steel		
BRI101	1/2	\$0.48
BRI102	3/4	\$0.20
BRI103	1	\$0.48
BRI104	1-1/4	\$0.54
BRI105	1-1/2	\$0.87
BRI106	2	\$0.90
BRI107	2-1/2	\$2.11
BRI108	3	\$1.81
Aluminum		
1-125A	1-1/4	\$7.55
1-150A	1-1/2	\$12.15
1-200A	2	\$19.96

Item Number	NPT	Price
Nickel Plated Brass		
LN38NPB	3/8	\$2.61
LN12NPB	1/2	\$3.52
LN34NPB	3/4	\$4.02
LN1NPB	1	\$4.73
Nylon		
316-22-002	3/8	\$0.64
316-22-003	1/2	\$0.76
316-22-007	3/4	\$1.52
316-22-008	1	\$2.56

Cable Support

TY-RAPS

Nylon

- Exceeds industry and aerospace standards SAE AS23190
- Stainless steel barb made of 316 corrosion resistant stainless steel
- Provides consistent performance and reliability for users who prefer a cable tie with a metal barb
- Ribbed and stiplled strap body prevents axial and lateral movement



WEATHER UV RESISTANT



STANDARD



SCREW MOUNT STANDARD



SCREW MOUNT WEATHER UV RESISTANT

Item Number	Length in " (mm)	Load Capacity in Lbs.	Max Bundle Dia. in " (mm)	Price	
Weather Resistant UV (Black)					
Sold in X (C=100, M=1,000 packs)				C	M
TY4UV-(X)	4(101.6)	18	.90(23)	\$9.21	\$34.37
TY6UV-(X)	6(152.40)	40	1.5(38)	\$10.05	\$61.81
TY8UV-(X)	8(203.2)	50	2(51)	\$11.03	\$78.51
TY11UV-(X)	11(279.4)	40	3(76)	\$24.92	\$137.06
TY15UV-(X)	15(381)	50	4(102)	\$25.34	\$179.45
Sold in X (L=50 pack, T=250 pack)				L	T
TY15HUV-(X)	15(381)	120	4(102)	\$18.74	\$75.52
Sold in 50 packs					
TY31UV-L	31(787.4)	120	9(229)		\$57.31
Standard (White)					
Sold in X (C=100 pack, M=1,000 pack)				C	M
TY4N-(X)	4(101.6)	18	.90(23)	\$7.07	\$28.67
TY6N-(X)	6(152.4)	40	1.5(38)	\$8.12	\$53.69
TY8N-(X)	8(203.2)	50	2(51)	\$10.33	\$68.53
TY11N-(X)	11(279.4)	40	3(76)	\$17.43	\$108.40
TY15N-(X)	15(381)	50	4(102)	\$23.73	\$165.24
Sold in X (L=50 pack, T=250 pack)				L	T
TY15HN-(X)	15(381)	120	2(51)	\$17.28	\$65.78
Screw Mount Standard (White)					
Sold in X (C=100 pack, D=500 pack)				C	D
TY8NMT-(X)	8(203.2)	50	4(102)	\$18.90	\$74.53
Sold in 50 packs					
TY15HNMT-L	15(381)	120			\$26.79
Screw Mount Weather UV Resistant (Black)					
Sold in X (C=100 pack, D=500 pack)				C	D
TY8UVMT-(X)	8(203.2)	50	2(51)	\$21.95	\$84.72
Sold in X (L=50 pack, T=250 pack)				L	T
TY15HUVMT-(X)	15(381)	120	4(102)	\$33.95	\$127.36

Installation Tools available on page 42

List pricing in catalog is subject to change without notice.

Stainless Steel

- Designed for use in critical applications where vibration, radiation, weathering, corrosion, and temperature extremes are a factor
- Non-magnetic stainless steel
- Rounded sides and smooth surface make it safe to handle
- TY series loop tensile strength of 100 lbs., MLT series loop tensile strength of 250 lbs.
- Self- locking design simplifies installation and eliminates protruding ends when used with installation tool
- PCS cushioning sleeve makes bundles more resilient available size: 18"(4.6mm) or .31"(7.9mm)



STAINLESS STEEL

Item Number	Length in " (mm)	Max Bundle Dia. in " (mm)	Price
TY Series			
TY5SS	5(127)	1(25)	\$1.94
TY8SS	7.9(200.66)	2(50)	\$2.38
TY14SS	14.3(363.22)	4(102)	\$2.85
TY27SS	26.8(680.72)	8(203)	\$5.40
TY33SS	33(838.20)	10(254)	\$3.38
MLT Series			
MLT2EH-LP	11.8(299.72)	2(51)	\$2.53
MLT4EH-LP	17.1(434.34)	4(102)	\$2.97
MLT6EH-LP	24(609.60)	6(152)	\$4.45
MLT10EH-LP	36(914.40)	10(254)	\$7.17

Mounts



SCREW MOUNT



ADHESIVE MOUNT

Item Number	Screw Number	Price
Screw Mount		
Sold in pack of 100 black=BK, white=WH		
CTM8-50-BK-C	8	\$18.63
CTM8-50-WH-C	8	\$17.00
CTM8-120-BK-C	8	\$38.48
CTM8-120-WH-C	8	\$34.17
CTM10-120-BK-C	10	\$38.48
CTM10-120-WH-C	10	\$34.90
CTM14-120-WH-C	14	\$33.48

Item Number	Load Capacity in Lbs.	Price
Adhesive Mount		
Sold in packs of 100 (C), or 50(L) black=BK		
MBA-30-BK-C	30	\$44.27
MBA-30-WH-C	30	\$45.23
MBA-50-BK-C	50	\$61.04
MBA-50-WH-C	50	\$55.46
MBA-150-BK-C	150	\$78.72
MBA-150-WH-C	150	\$71.60
MBA-150-BK-L	150	\$39.36
MBA-150-WH-L	150	\$35.56

Stainless Steel Mount (2-way mount)		
MTM2H-Q*	8 (M4)	\$4.41

Images are representative of products listed and may not be actual product.

Cable Support

MOUNTS + STUDS

- Facilitate and simplify repairs at sea
- Protect against galvanic corrosion
- Maximize design and work sequence flexibility
- All metal parts made of 304 & 316 stainless steel
- All Click Bond adhesive-bonded fasteners are supplied with disposable installation fixtures or has a built in installation fixture. These fixtures clamp the fasteners in place under positive pressure while the adhesive cures, ensuring optimal joint strength and bond-line consistency.

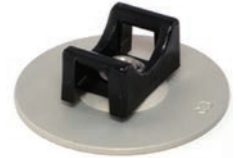
Mounts



CM460VG5



CB4561V5



CB3019A3N

Item Number	Description	Material	Dimension"(mm)	Max Tie Performance	Price
CB3019A3N	Swivel cable mount	Thermoplastic/aluminum	1.25(31.8) x 1.25(31.8)	150 lbs. (68 kg) shear	\$2.50
CM467VG	Large tie mount	Thermoplastic	2.02(51.3) x 1.10(27.9)	---	\$6.22
CB4561V5	Low profile cable tie anchor mount	Glass	1.12(28.45) x 0.75(19.1)	50 lbs. (22 kg) shear	\$2.79
CB9302V3	Miniature cable mount	Glass	0.44(11.2) x 0.44(11.2)	170 lbs. (77) shear	\$2.09
CM460VG5	Low profile cable tie mount	Glass	1.12(28.4) x 0.75(19.1)	50 lbs. (22 kg) shear	\$2.36
CM905VGP	Webbing loop	Glass	3.25(82.6) x 1(25.4)	400 lbs. (181 kg) shear	\$9.88

Studs



1.5" BASE



2" BASE



CN125-1420-16CRMP

Item Number	Screw Size	Performance	Price
.62" Base			
CS62-1032-16CRP	10-32x1	250 lbs. (113 kg) tension/ 400 lbs. (181 kg) shear	\$4.30
1.5" Base			
CS125-1032-116CRMP	10-320 x 1	1000 lbs. (454 kg) tension/ 2000 lbs. (908 kg) shear	\$4.87
CS125-1420-16CRMP	1/4-20 x 1	1000 lbs. (454 kg) tension/ 2000 lbs. (908 kg) shear	\$5.39
2" Base			
CS200-1420-16CRMP	1/4-20 x 1	1000 lbs. (453 kg) tension/ 1500 lbs. (680 kg) shear	\$14.08
CS200-3816-16CRMP	3/8-16 x 1	1700 lbs. (771 kg) tension/ 4000 lbs. (1814 kg) shear	\$17.95
1-1/4" Standoff Base			
CN125-1420-16CRMP	1/4-20 x 1	1000 lbs. (453 kg) tension/ 2,000 lbs. (907 kg) shear	\$28.73

List pricing in catalog is subject to change without notice.

Adhesives

- Resealable cartridge reduces adhesive waste
- Convenient 40 and 50ml packets for production
- Bonds unprepared metal
- Water Resistant
- Fast cure at room temperature
- Provides high strength and fatigue endurance
- Versatile for many different substrates including ABS, acrylics, aluminum*, FRP, PVC, carbon steel*, and stainless steel* (*recommend primer)
- ABS approved please call for MDS data sheets



ADHESIVE



CB92

Item Number	Description	Mix Ratio	Working Time	Handling Strength	Size	100%	Price
CB200-40	Two part thixotropic	8:01	5 min.	30 min.	40 ml	24 hrs.	\$16.22
CB4250-50E	Two part methacrylate	10:1	4-6 min.	18 min.	50 ml	24 hrs.	\$32.45

Item Number	Description	Price
CB92	Adhesive mix kit for CB200	\$5.20

Tools and Dispensers



CB100-81



CB106

Item Number	Description	Price
CB100-81	Manual dispensing gun and slide	\$66.92
CB106	Mixing Tip	\$1.29
CB911	Solvent wipes	\$1.12

Cable Support

TY-RAP TOOLS + NYLON CLAMPS

Tools

Stainless Steel

- Tensioning is controlled by installer, flush cut off is made by twisting tool
- Single handle trigger for fast installation

Nylon

- Max cable thickness: .06"(1.6mm)
- Max cable width: .18"(4.8mm)
- Max test strength: 50 lbs.
- Auto cutter for cables .089"(2.26mm) to .189"(4.80mm)



ST2MT



FD600A

Item Number	Description	Price
Stainless Steel		
ST2MT	Used with standard, light-extra heavy cross section PAN-STEEL® type MLT ties, type MLTC/MLTFC coated ties, and type MLTDH double wrapped ties	\$285.20
Nylon		
FD600A	Fastening tool with adjustable pressure	\$38.00

Nylon Clamps

- Molded in open position for easy assembly
- Beveled inner edges to prevent abrasion
- High quality nylon
- Temperature range -40°F(-40°C)-365°F(185°C)



NYLON STANDARD



NYLON UV

Item Number	Size in "	Standard Price / UV Price
This product available in 100 packs, UV protected. Also available in black with suffix code UV		
N3	3/16	\$.36 / \$.25
N4	1/4	\$.27 / \$.42
N6	3/8	\$.42 / \$.57
N7	7/16	\$.48 / \$.57
N8	1/2	\$.42 / \$.30
N10	5/8	\$.48 / \$.66
N12	3/4	\$.57 / \$.78
N14	7/8	\$.63 / \$.84
N16	1	\$.63 / \$.87
NSUV (not available in white)	5/16	\$0.44

List pricing in catalog is subject to change without notice.

Cushioned Clamps

- General purpose EPDM
- Durable cushion helps reduce vibration while protecting your product
- Open position for ease of assembly
- .265" mounting hole diameter
- 365°F(185°C) to -40°F(-40°C)



STAINLESS STEEL

Item Number	Size in "	Price
Stainless Steel 1/2" Wide		
S225SSE4	1/4	\$1.40
S225SSE6	3/8	\$1.40
S225SSE8	1/2	\$1.40
S225SSE10	5/8	\$1.68
S225SSE12	3/4	\$1.68
S225SSE14	7/8	\$1.76
S225SSE16	1	\$2.40
S225SSE18	1-1/8	\$2.40
S225SSE20	1-1/4	\$2.40
S225SSE22	1-3/8	\$2.40
S225SSE24	1-1/2	\$2.40
S225SSE28	1-3/4	\$2.40
S225SSE32	2	\$2.40
S225SSE40	2-1/2	\$6.22
S225SSE48	3	\$7.00

Aluminum Tray



ALUMINUM TRAY

Item Number	Width in " (mm)	Price
All tray comes in 6' (2meters) lengths only		
CT2-AL	2(50)	\$50.16
CT3-AL	3(80)	\$56.40
CT4-AL	4(102)	\$63.65
CT6-AL	6(153)	\$79.50
CT9-AL	9(229)	\$105.60
CT12-AL	12(304)	\$126.96

Images are representative of products listed and may not be actual product.

Cable Support

CABLE TRAY + CABLE RETAINER

Wire Duct

- All ducts come in 6' (2 meters) White lengths only
- Rigid PVC, self-extinguishing
- Non slip cover design (included)
- Burr free edges
- Recess boss for rapid mounting of components
- Restricted slot opening
- Two predetermined breaklines



Item Number	Actual: Slat/Space in " (mm)	Nominal Dimensions in " (mm)	Price
T1			
T1-1010W	.20(5)/ .30(7.6)	1(25.4) x 1(25.4) x 72(1828)	\$31.20
T1-1515W	.31(8)/ .47(12)	1.5(38.1) x 1.5(38.1) x 72(1828)	\$43.08
T1-1530	.31(8)/ .47(12)	1.5(38.1) x 3(76.2) x 72(1828)	\$57.00
T1-2222W	.31(8)/ .47(12)	2.25(57.15) x 2.25(57.15) x 72(1828)	\$49.44
T1-3030W	.31(8)/ .47(12)	3(76.2) x 3(76.2) x 72(1828)	\$73.80
T1-4040W	.31(8)/ .47(12)	4(101.6) x 4(101.6) x 72(1828)	\$96.48
T1E			
T1E-1022W	.16(4)/ .24(6)	1(25.4) x 2.25(57.15) x 72(1828)	\$42.24
T1E-1522W	.16(4)/ .24(6)	1.5(38.10) x 2.25(57.15) x 72(1828)	\$46.80
T1E-2222W	.16(4)/ .24(6)	2.25(57.15) x 2.25(57.15) x 72(1828)	\$49.44
T1E-2230W	.16(4)/ .24(6)	2.25(57.15) x 3(76.2) x 72(1828)	\$60.96
T1E-3030W	.16(4)/ .24(6)	3(76.2) x 3(76.2) x 72(1828)	\$73.80

Item Number	Dimensions in "	Price
Covers		
COV-10W	1 x 6	\$6.96
COV-15W	1.5 x 6	\$9.36
COV-22W	2.25 x 6	\$11.52
COV-30W	3 x 6	\$17.16
COV-40W	4 x 6	\$19.56

Cable Retainer

- Provide additional strain relief of wire duct fingers
- Eliminates bulging against sidewalls



Item Number	Dimensions in "	Price
CL-1515	1.5 x 1.5	\$1.42
CL-1522	1.5 x 2.25	\$1.54
CL-1530	1.5 x 3	\$1.68
CL-2222	2.25 x 2.25	\$1.88
CL-2230	2.25 x 3	\$1.94
CL-3030	3 x 3	\$2.58
CL-4040	4 x 4	\$3.52

List pricing in catalog is subject to change without notice.