

THE WILLIAMSBURG HOTEL

96 Wythe Ave. Brooklyn, NY 11249

T: 718-362-8100 | E: hello@thewilliamsburghotel.com



AMADEUSCHAINCODE:YX
AMADEUS PROPERTY CODE: NYCTWH

APOLLO/GALILEO CHAIN CODE: YX
APOLLO/GALILEO PROPERTY CODE: C7398

SABRECHAINCODE:YX
SABRE PROPERTY CODE: 310592

Fifty years ago, Williamsburg was a neighborhood of industry. Today it's a bustling community full of creatives, dreamers, and doers meeting for a drink and making things happen.

HOTEL FEATURES

- * 147 Guest Rooms including 8 suites
- * Laundry Service
- * Wake-up Service
- * Shopping nearby
- * Pet Friendly (charges apply)
- * Access to local boutique gyms
- * Free wi-fi
- * Central air conditioning
- * Complimentary bicycle rental
- * Brooklyn High Tea
- * Brooklyn Bread Lab
- * Harvey Restaurant
- * Bar & Lounge
- * Adjoining rooms
- * 24 hour front desk
- * Water Tower Rooftop Bar
- * Outdoor 40' Pool with Roof Deck

GUEST ROOMS

- *Hardwood floors
- *13' ceilings
- *Media Hub Center
- *Standing Shower in Queen Rooms
- *Standing Shower and/or Tub combo in King Terrace Rooms

Specialty Guest Room

Features:

- *Queen Rooms feature Juliet Balcony
- *Queen Terrace and King Terrace Rooms feature private terraces
- *Skyline Suite and Studio Suite all have private terraces with seating area and shower/tub combo



SKYLINE SUITE



ROOFTOP & POOL

Perched above the city streets, our rooftop oasis boasts breathtaking views, an outdoor pool, bar and café.

DINING

Located on our lobby floor is our restaurant Harvey. With 130 seats, Harvey offers new American cuisine with seasonal items and farm to table options. Serving breakfast, lunch and dinner 7 days a week and Brooklyn High Tea Friday-Sunday.

The Lobby Bar offers seating for 40 around an exquisite rainbow bar with a sophisticated cocktail menu and seasonal patio.

The Watertower is an exclusive 55-person bar offering guests a truly unique experience with custom menu looking over the entirety of Brooklyn, East River and skyline of Manhattan.

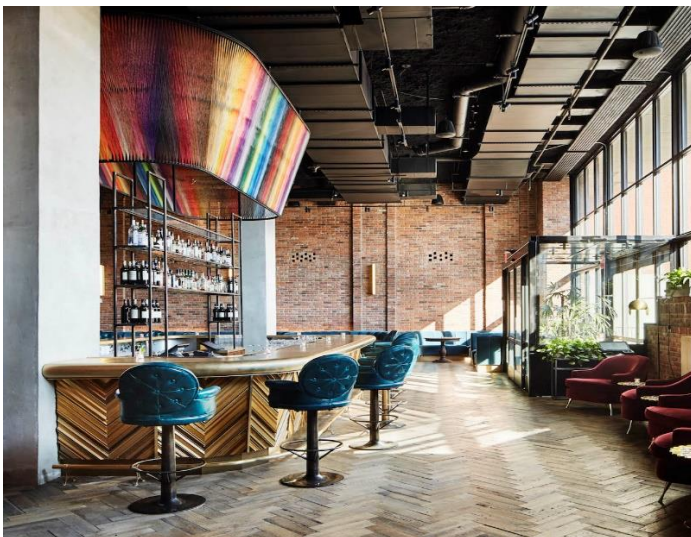


HARVEY RESTAURANT

MEETINGS & EVENTS

*Our Ballroom offers 6,500 square feet of space complete with 30' ceiling, chandeliers, parquet floors and an expansive balcony that accommodates up to 400 seated guests.

*The Library Bar accommodates up to 120 guests with 1,600 square feet and 20' ceiling offering a more intimate atmosphere.



LOBBY



BALLROOM

TRANSPORTATION

From Manhattan:

By Metro/Subway: Take the Brooklyn bound L subway train to the Bedford Avenue stop. The Williamsburg hotel is a seven (7) minute walk from the subway.

By Ferry: Take the East River Ferry to North 6th Street / North Williamsburg stop located at North 6th Street and Kent Avenue. Walk five minutes to The Williamsburg Hotel located at 96 Wythe Avenue (Wythe Avenue and 10th Street).

From Airport: (by car)

John F. Kennedy International Airport: 30 minutes
LaGuardia Airport: 20 minutes
Newark International Airport: 40 minutes

