



THE WHITEHALL

Warm Texas Hospitality

Opened in 1963, The Whitehall quickly established itself as an architectural landmark and epicenter of style. Today, its legacy continues, redefined and reimaged for a new generation of guests who appreciate modern style and impeccable service



At a Glance



Downtown location within walking distance of many corporate headquarters & the Convention Center



259 oversized guest rooms with stylish furnishings, hardwood floors & signature amenities



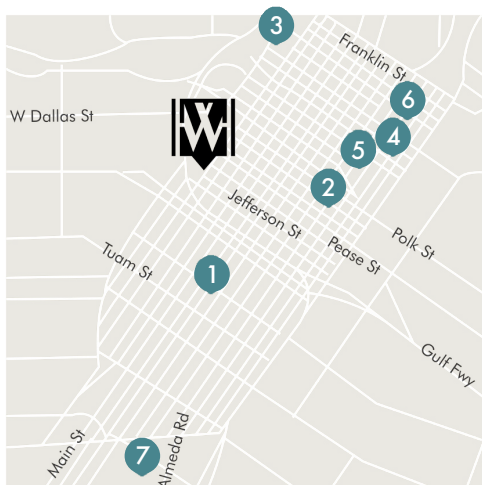
12,000 square feet of versatile meeting and event space include 17 multi-use spaces accommodating up to 500 guests



Three in-house restaurants offer authentic local cuisine, complemented by Sotherly signatures such as Edgar's Truth private label bourbon

Unmatched Location

Located in the heart of the city's Central Business District, The Whitehall is the premier choice for meetings and events in Houston. The hotel's prime downtown location puts guests within walking distance of many of the city's hottest new restaurants, bars, and nightclubs, as well as the convention center and top sports and entertainment venues.



- 1 Midtown 3 blocks
- 2 Toyota Center 0.7 mile
- 3 Theater District 0.7 mile
- 4 Convention District | Avenida Houston 1 mile
- 5 Discovery Green 1 mile
- 6 Minute Maid Park 1.5 miles
- 7 Museum District | Medical Center | NRG 12 minutes via lightRail

Our Hotel

GUEST ROOMS — Blending modern comforts with signature Houston touches, the hotel's 259 oversized guest rooms feature plush Beautyrest® mattresses with luxurious bedding, hardwood floors, eco-friendly bath amenities, and sweet Southern treats.

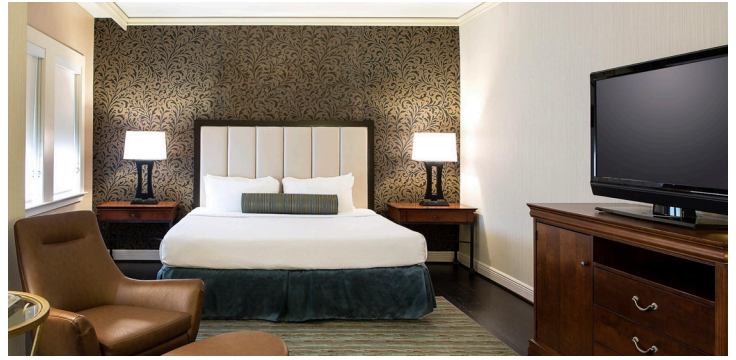
PERSONALIZED SERVICE — A Sotherly Host ensures arriving guests experience true Southern hospitality (and get the inside story on Houston's hidden gems and local hot spots).

POOL TERRACE — Guests enjoy easy access to our second floor rooftop swimming pool and landscaped sundeck featuring private cabanas and lounge seating.

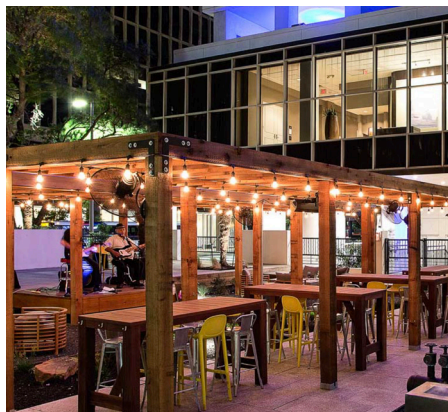
FITNESS CENTER — Open 24/7, the hotel's Fitness Center is equipped with PRECOR fitness machines.

LUXURY TRANSPORTATION — The hotel offers complimentary shuttle service throughout downtown and Midtown, as well as expert assistance with private airport transfers and group transportation for your meeting or event.

HIGH-SPEED WI-FI — Complimentary Wi-Fi in all guest rooms, meeting spaces and public areas enables your group to send, stream, and download with lightning speed.



Fuel up with an array of light bites for breakfast or lunch, and take on the day with a fresh cup of coffee—brewed exclusively with LAVAZZA Coffee!



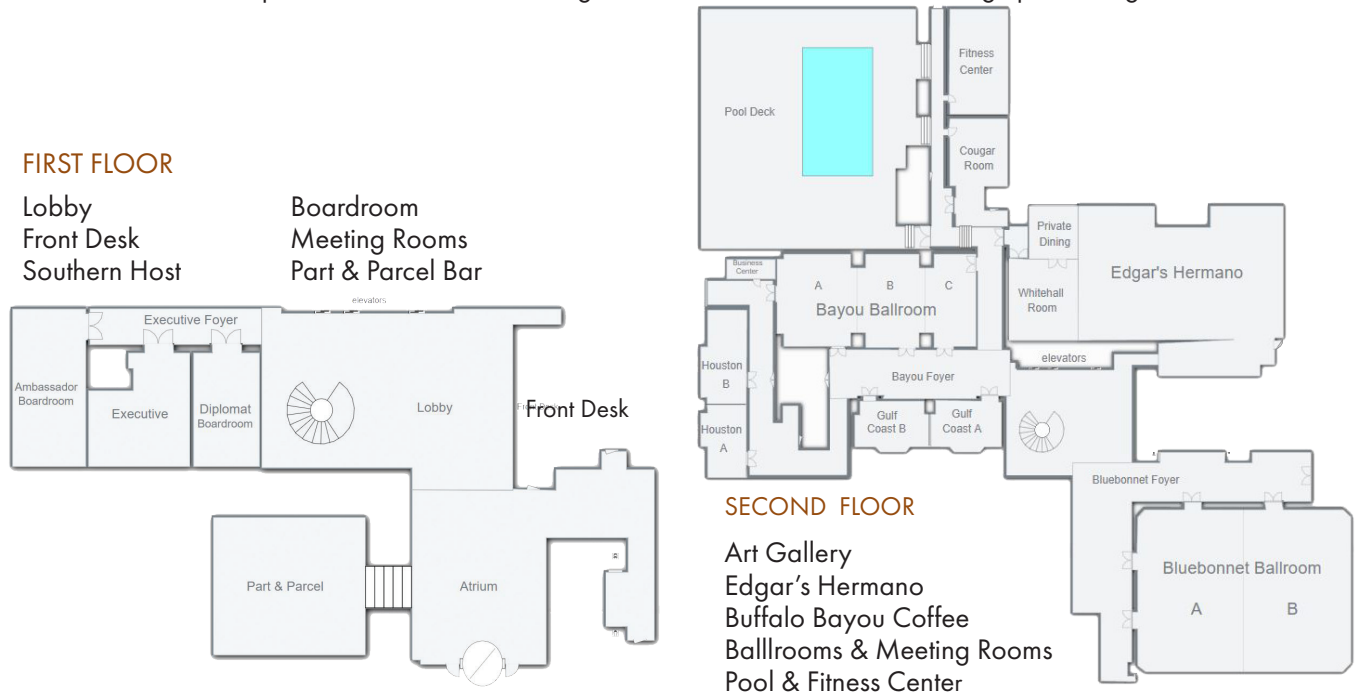
Downtown Houston's go-to for craft cocktails, Texas-influenced fare, and private label Edgar's Truth bourbon — served indoors & out



A harmonious blend of Houston's native Tex-Mex cuisine and classic Southern fare, Edgar's Hermano serves up some of the city's most inspired and authentic dishes.

Host a More Memorable Meeting

Seamlessly combining a perfect downtown location with modern style and Southern hospitality, The Whitehall is Houston's premier address for meetings and social events accommodating up to 500 guests.



Numbers reflected below represent max set/safe distancing set for our spaces, current max setting for safe distancing guidelines is 10 guests per 300 sq. ft.

	Dimensions	Ceiling Height	Area (Sq Ft)	Theater	Classroom	Banquet	Conference	U-shape	Hollow Square	Reception
Bluebonnet Ballroom	57.5' x 77.0'	12.0'	4,233	528	309	280	60	72	84	500
Bluebonnet A	57.5' x 35.2'	12.0'	2,024	168	120	100	42	42	54	200
Bluebonnet B	57.5' x 41.8	12.0'	2,403.50	221	150	150	42	42	54	300
Bluebonnet Foyer			2,130.90							
Bayou Ballroom	33.7' x 59.3'	11.5'	1,919.80	168	96	120	42	42	60	200
Bayou A/B	33.7' x 43.9'	11.5'	1,479.40	108	57	60	36	39	48	100
Bayou B/C	33.7' x 42.3'	11.5'	1,425.50	108	57	60	36	39	48	100
Bayou A	33.4' x 17.0'	11.5'	558.8	42	18	30	24	21		50
Bayou B	33.7' x 26.9'	11.5'	875.5	91	45	50	25	21	24	50
Bayou C	33.8' x 15.4'	11.5'	509.8	32	18	30	24	21		50
Bayou Foyer	24.4' x 63.4'	11.5'	1,546.90							70
Whitehall Room	35.9' x 28.6'	15'	1,026.70	100	50	80	24	27	36	95
Cougar Room	19.5' x 36.5'	10'	711.7	32	18	30	18	15	18	64
Gulf Coast A	16.8' x 28'	10.8'	470.4	40	18	20	18	15	24	46
Gulf Coast B	19.7' x 28'	10.8'	551.6	40	18	20	18	15	24	49
Houston A	16.8' x 26.9'	10.0'	451.9	36	12	20	18	21		46
Houston B	16.8' x 33.8'	10.0'	567.8	32	18	30	24	21		50
Ambassador	15.5' x 35.1'	10.0'	544	48	18	30	24	21		40
Executive	22.0' x 21.0'	10.1'	462	38	21	20	12	15	12	30
Diplomat Boardroom	21.5' x 13'	10.0'	279.5				10			10
Executive Foyer	8.0' x 42.5'	10'	340							25