

LEGENDARY ROMANCE *on* GALVESTON ISLAND



A host of beautiful brides have selected The Tremont House as the ideal setting for romantic weddings. Located in Galveston's historic Strand District within walking distance of a wide array of shops, restaurants, museums, and galleries, The Tremont House is legendary for its gracious hospitality and stylish accommodations. Our spectacular ballrooms are romantic venues for select and sizeable weddings. Our professional staff will make sure that every detail is handled to perfection. Visit us today and let us make your dreams come true.



THE TREMONT HOUSE

EVERY GOOD FAIRY TALE NEEDS *a* HAPPY ENDING



LEFT: The Tremont Ballroom, located in the Davidson Building, offers 8,000 sq. ft. of elegant space. TOP RIGHT: The hotel's professional event staff will ensure your reception is flawless. MIDDLE RIGHT: The Tremont Suites feature hardwood floors, high ceilings and deluxe linens. BOTTOM RIGHT: An elegant sitting area, guest bathroom, dining table and parlor bar comprise a Belmont Suite.

GUEST ROOMS

Guest Rooms 103
Suites..... 30

DINING

- Tremont Café
- Toujouse Bar
- Rooftop Bar
- Room Service

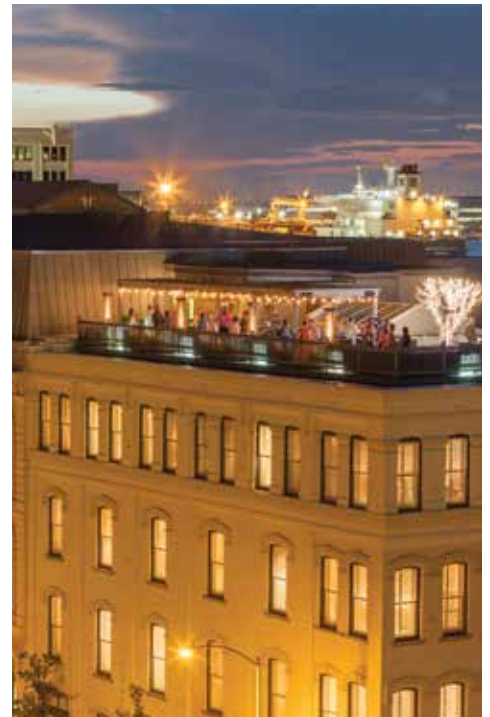
GENERAL INFORMATION

- Non-Smoking Hotel

MEETINGS AND EVENTS

- Over 14,000 Square Feet of Meeting Space
- Two Ballrooms

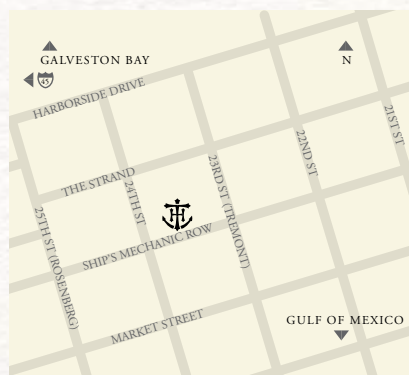
HISTORIC GALVESTON'S *legendary* LODGING



TOP LEFT: The Annex, in the adjacent Davidson Building is ideal for pre-reception or a quiet retreat. TOP MIDDLE: The Sam Houston Room's large windows add natural warmth to special events and receptions. TOP RIGHT: The Rooftop Bar offers spectacular views of the Island. BOTTOM LEFT: The historic Toujouse Bar, located in the lobby, is a sophisticated gathering place for guests. BOTTOM RIGHT: The hotel's Tremont Café is open for breakfast, lunch and dinner.

FEATURES

- Valet Parking
- Fitness Center
- Wireless Internet – Public Spaces

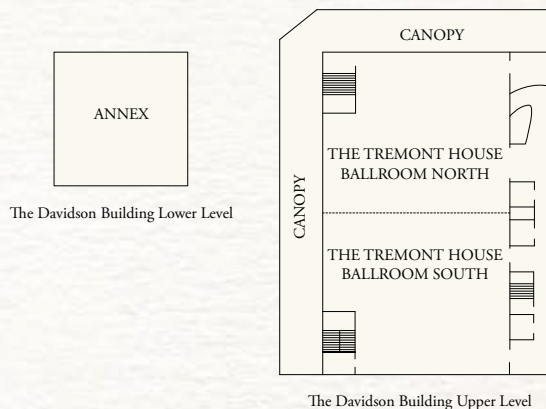
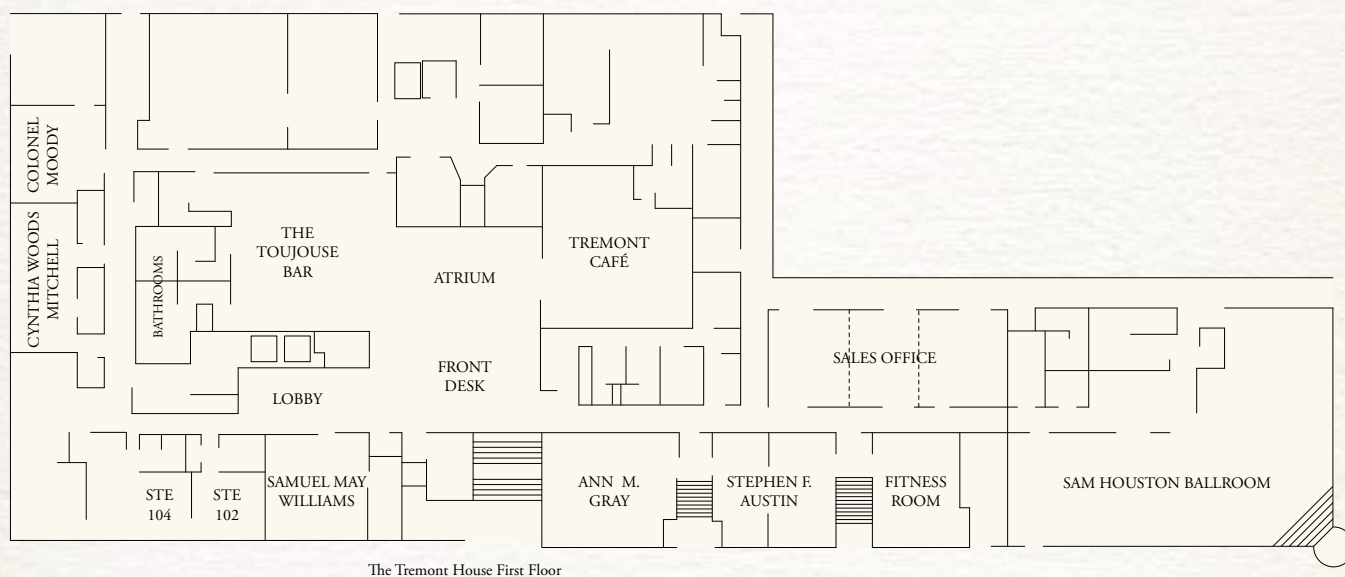


TRANSPORTATION

- 45 Minutes to Houston Hobby Airport
- 75 Minutes to Houston Bush Intercontinental Airport

MEETING SPACE CAPACITY CHART

NAME OF ROOM	DIMENSIONS	SQ. FT.	CEILING HEIGHT	BANQUET	THEATER	CLASSROOM	RECEPTION	CONFERENCE
Samuel May Williams	32' X 23'	736	10'	50	70	25	40	20
Colonel Moody	18' X 16'	270	12'	—	—	—	—	10
Lobby-Atrium	—	—	—	60	—	—	200	—
Sam Houston Ballroom	78' X 63' L-Shape	2,842	10'	180	300	150	275	50
Tremont Ballroom	118.6' X 67'	7,946	12'10"	650	800	450	800	—
North	59.3' X 67'	3,973	12'10"	320	400	225	400	60
South	59.3' X 67'	3,973	12'10"	320	400	225	400	60
Ann M. Gray	30' X 23'	690	10'	50	60	36	70	20
Stephen F. Austin	29' X 23'	667	10'	40	60	30	70	12
Cynthia Woods Mitchell	17' X 40'	700	10'	—	—	—	—	18
Annex	—	1,925	—	150	—	50	150	50



THE TREMONT HOUSE