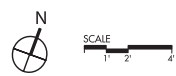
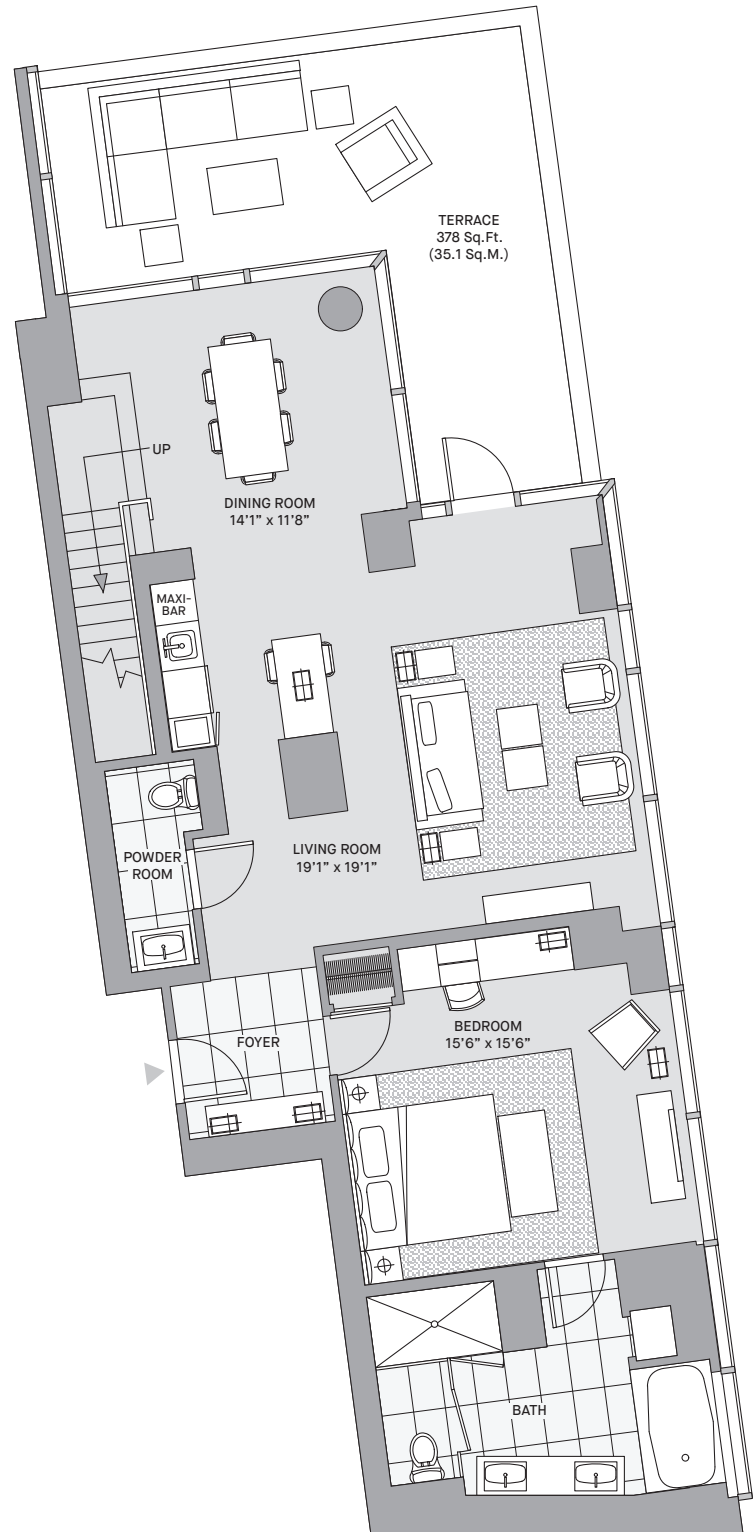
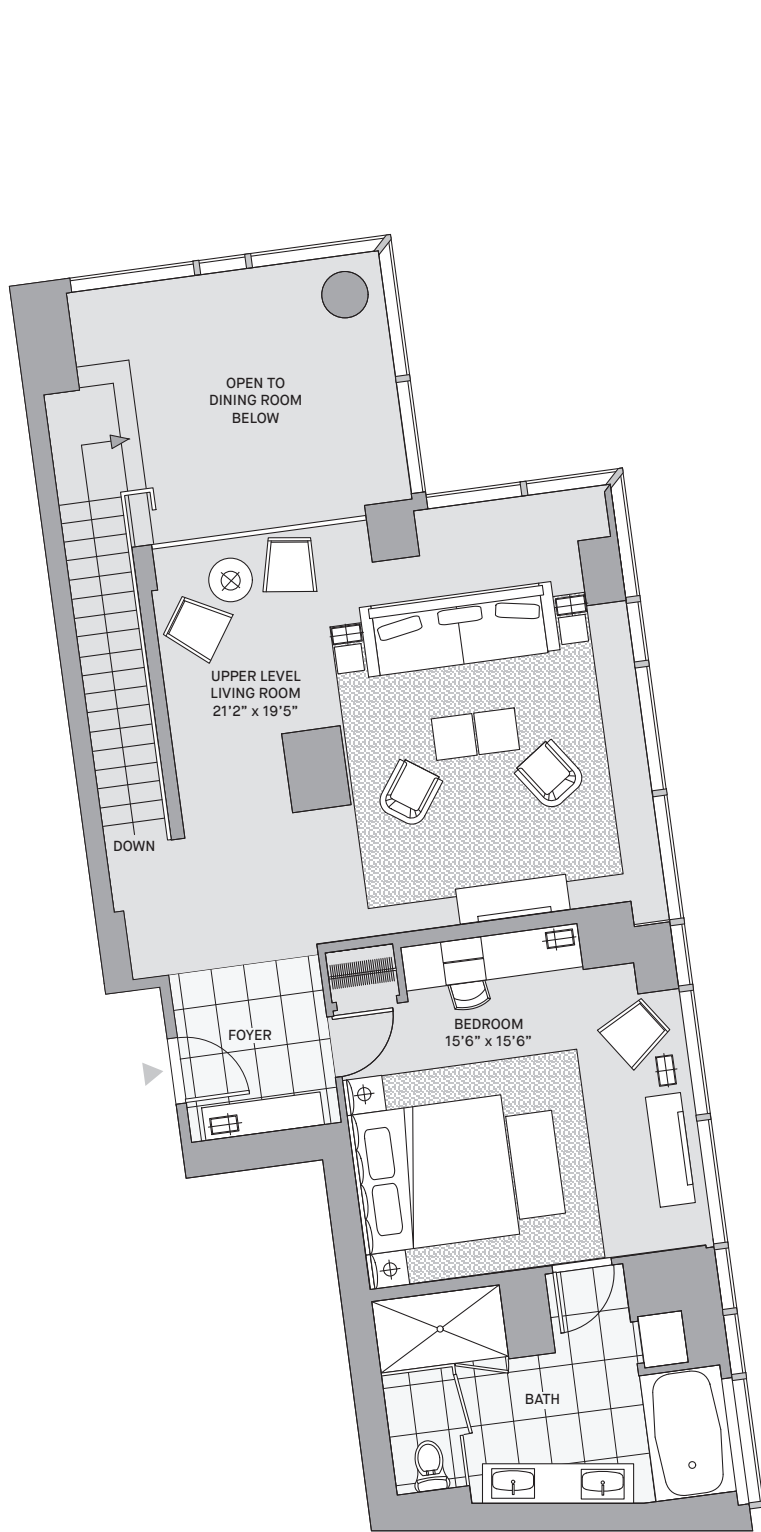


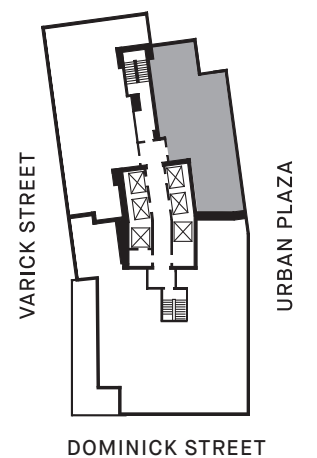
DOMINICK DUPLEX UPPER AND LOWER LEVEL

1 bedroom, 1 bath
1,050 sq ft (97.5 sq m)

1 bedrooms, 1.5 baths
1,281 sq ft (119 sq m)



SPRING STREET



The DOMINICK

246 SPRING STREET, NEW YORK, NY 10013 | THEDOMINICK.COM