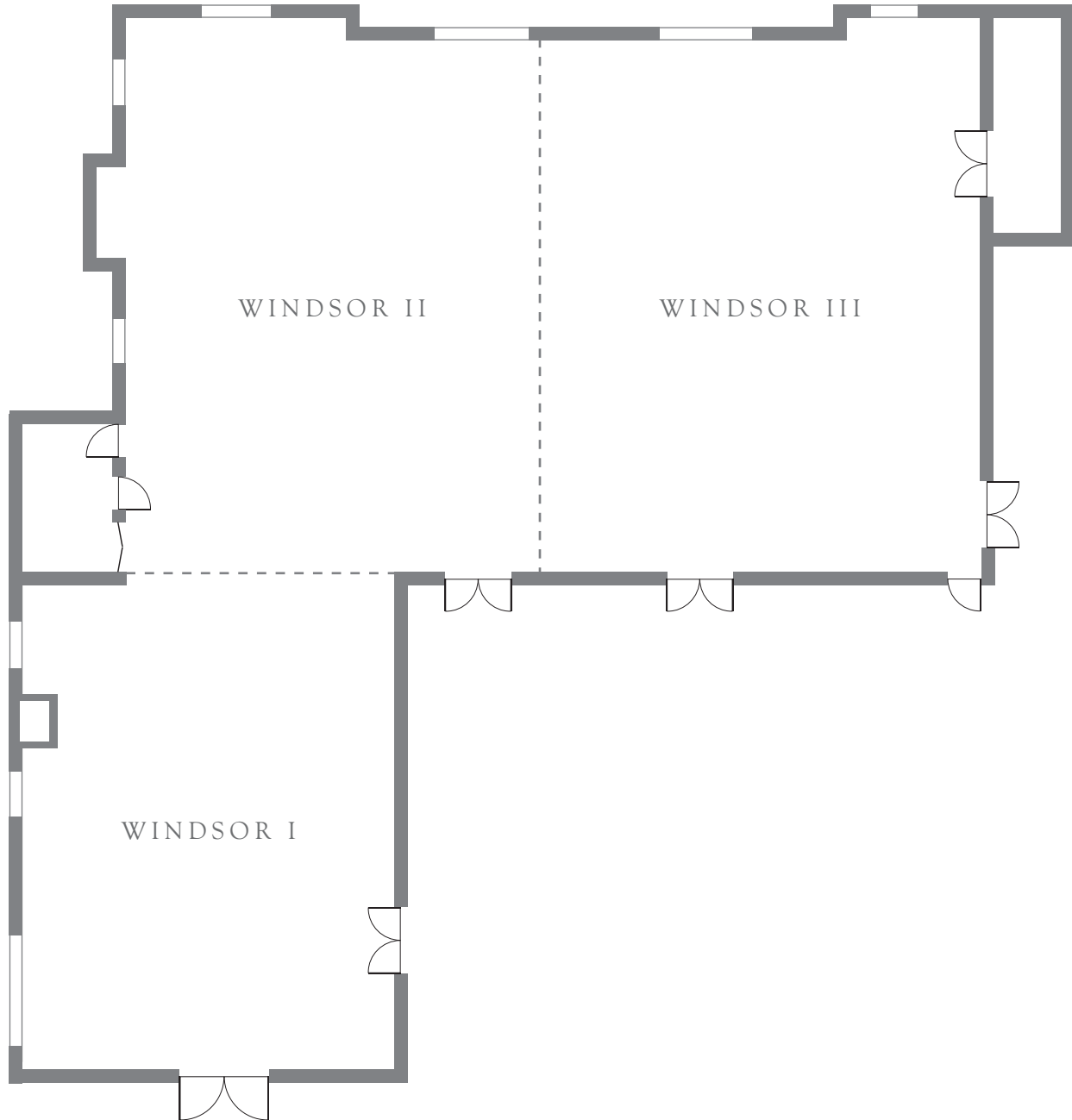




DEER PATH INN

EST. 1929

WINDSOR HALL



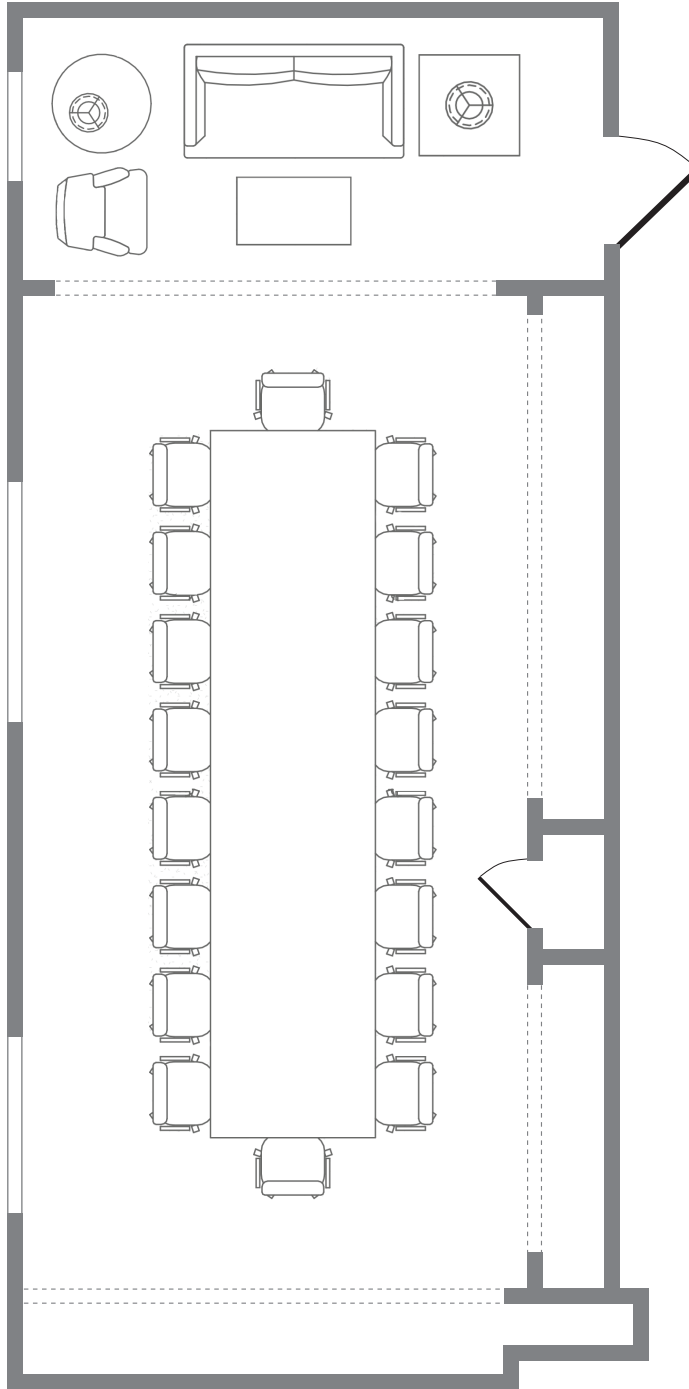
| SPACE | USUABLE SQ. FT. | COCKTAIL RECEPTION (STANDING) | SEATED BANQUET WITH DANCE FLOOR | THEATER | CLASSROOM (18" WIDE DESKS) | HOLLOW SQUARE | U-SHAPE (USING 8' TABLES) | TRADE SHOW (8' x 10' BOOTH) |
|--------------|-----------------|-------------------------------|---------------------------------|---------|----------------------------|---------------|---------------------------|-----------------------------|
| WINDSOR HALL | 4,776 | 478 | 225 | 250 | 150 | — | 75 | 30 |
| WINDSOR I | 1,369 | 135 | 60 | 100 | 50 | 36 | 28 | 9 |
| WINDSOR II | 1,642 | 150 | 80 | 120 | 70 | 40 | 32 | 10 |
| WINDSOR III | 1,765 | 160 | 100 | 150 | 80 | 44 | 36 | 11 |



DEER PATH INN

EST. 1929

CAMBRIDGE BOARDROOM



SPACE

USABLE
SQ. FT.

CONFERENCE

CAMBRIDGE BOARDROOM

582

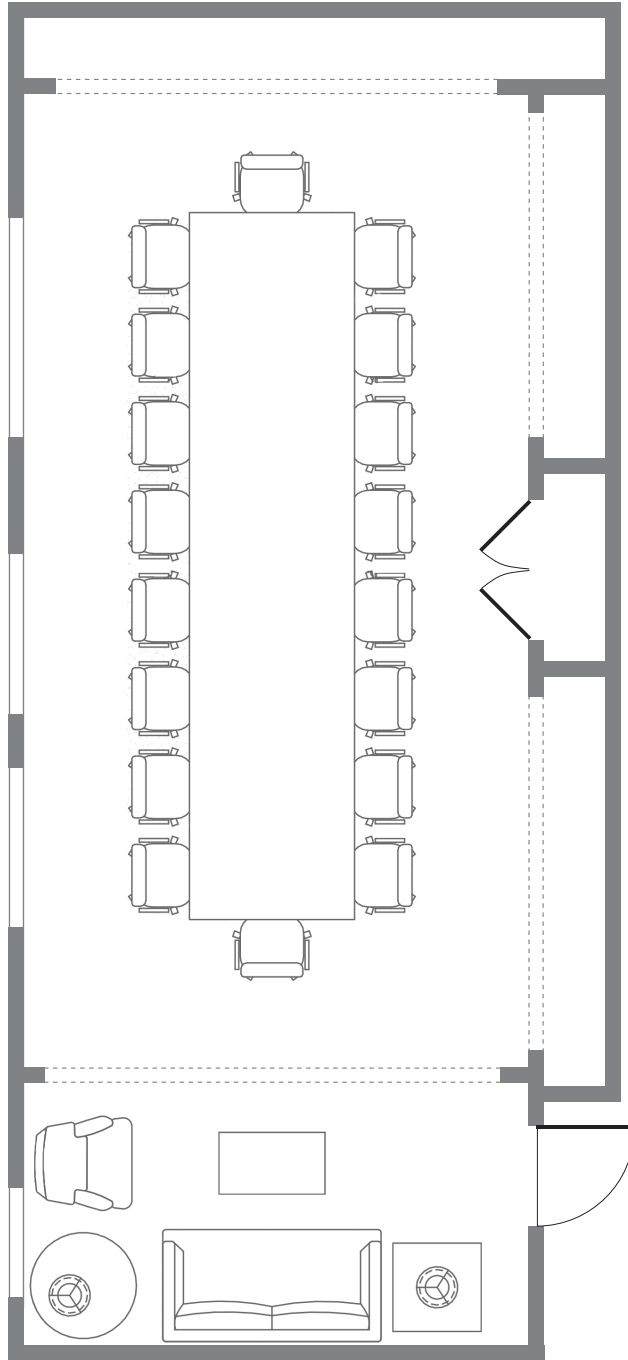
18



DEER PATH INN

EST. 1929

OXFORD BOARDROOM



SPACE

USABLE
SQ. FT.

CONFERENCE

OXFORD BOARDROOM

640

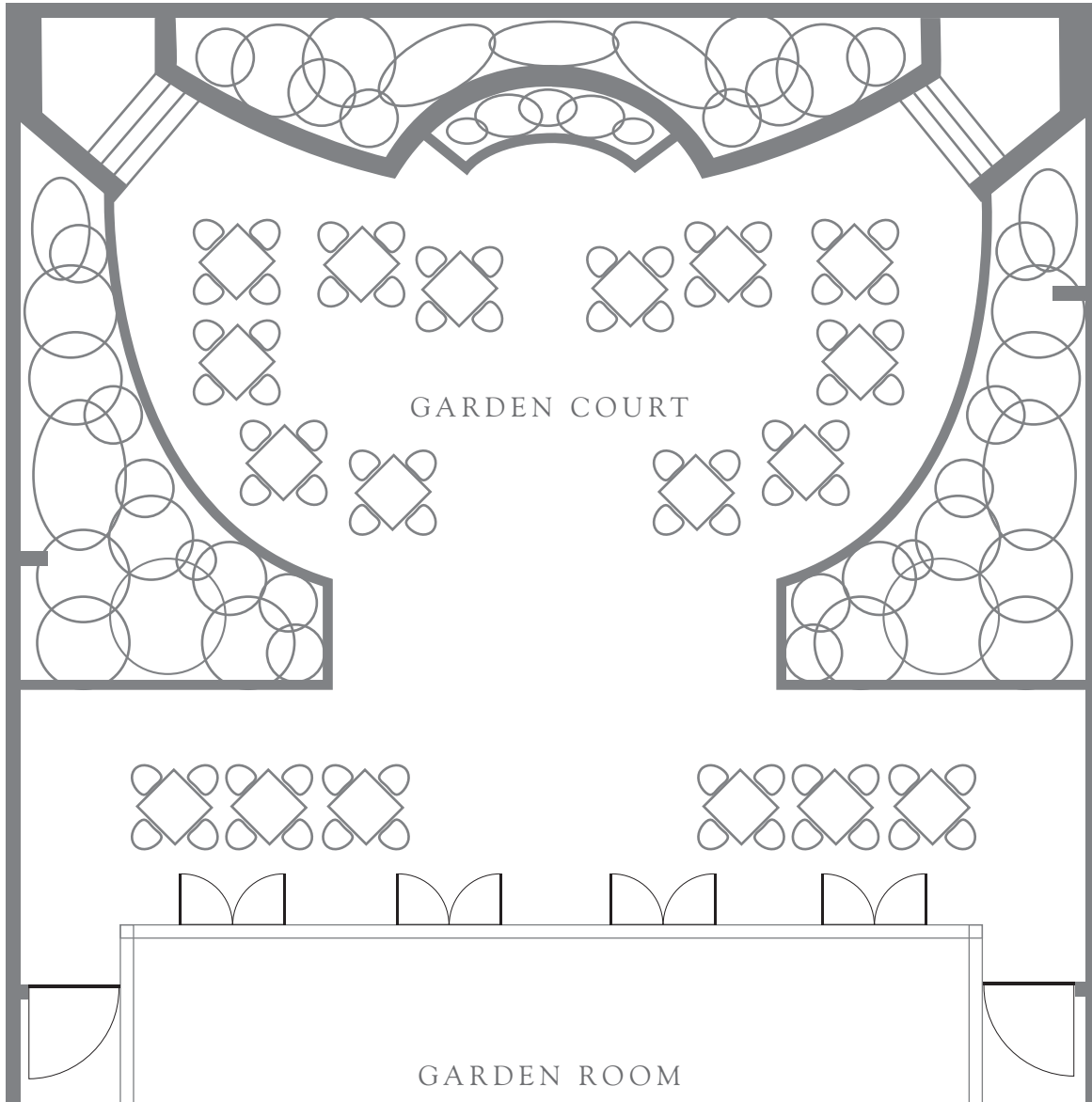
18



DEER PATH INN

EST. 1929

GARDEN ROOM & COURT



| SPACE | USUABLE SQ. FT. | COCKTAIL RECEPTION (STANDING) | SEATED BANQUET WITH DANCE FLOOR | THEATER |
|--------------|-----------------|-------------------------------|---------------------------------|---------|
| GARDEN ROOM | 979 | 80 | 60 | — |
| GARDEN COURT | 1,979 | 175 | 80 | 90 |