

MEZZANINE LEVEL



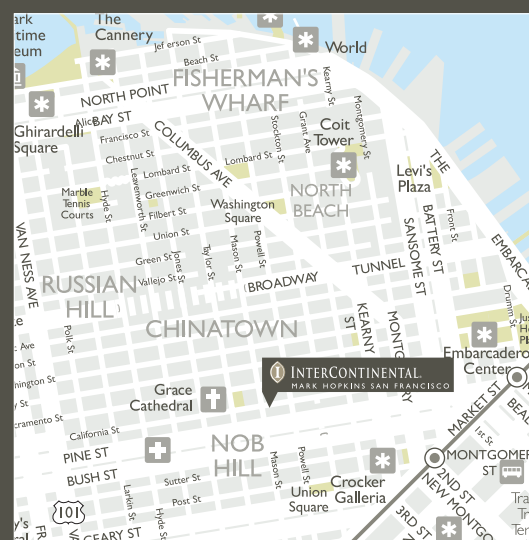
SECOND LEVEL



INTERCONTINENTAL MEETINGS.



Name of Room	Theater Style	Classroom	Cocktail Reception	Banquet	U-Shape	Conference	Size (sq. ft.)	Length x Width (ft.)	Height (ft.)	Floor
Board Room	—	—	—	—	—	16	600	40 x 15	9	M
Harvard	20	15	25	20	—	14	360	24 x 15	9	M
Stanford	50	32	50	40	20	20	486	27 x 18	9	M
Six Continents	96	60	120	80	38	32	1,000	40 x 25	9	M
George D. Smith	60	40	70	50	—	34	756	54 x 14	9	M
Six Continents & GDS	120	80	180	130	38	32	1,720	40 x 43	9	M
Barclay I	30	20	40	30	16	20	405	27 x 15	7.5	2
Barclay II	30	20	40	30	16	20	435	27 x 15	7.5	2
Barclay I & II	60	40	100	60	30	30	835	54 x 15	7.5	2
Willard I	30	20	40	30	16	20	405	27 x 15	7.5	2
Willard II	30	20	40	30	16	20	435	27 x 15	7.5	2
Willard I & II	60	40	100	60	30	30	835	54 x 15	7.5	2



INTERCONTINENTAL MARK HOPKINS SAN FRANCISCO

InterContinental Mark Hopkins San Francisco
 One Nob Hill San Francisco CA 94108
 Tel: +1 415 392 3434 Fax: +1 415 421 3302
 icmarkhopkins@ihg.com
 www.intercontinentalmarkhopkins.com

SAN FRANCISCO

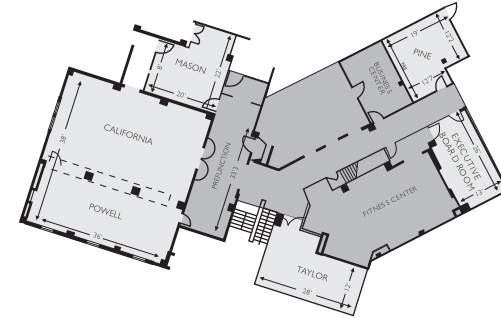
InterContinental Meetings are designed to capture a genuine sense of place that will inspire delegates and get results. Our experienced team understands the demands on your time as a busy event planner and is focused on making sure that the process runs seamlessly at every stage. Whatever the event, the InterContinental Meetings team is here to make life easier for you and to create a rewarding occasion for those attending.



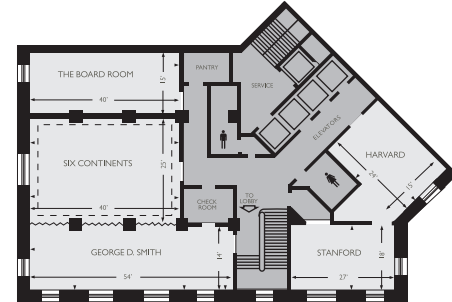
THE HOTEL

As splendid now as when it opened to great fanfare in 1926, the InterContinental Mark Hopkins San Francisco is one of the city's finest hotels. Conveniently situated at the crest of illustrious Nob Hill and the intersection of three cable car lines, this venerable landmark commands a reputation for its historic legacy and service excellence. Whatever the event, our team is there for you and understands what it takes to help you create a flawless and memorable occasion for your guests.

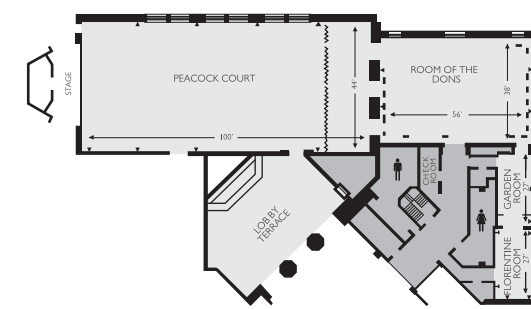
CALIFORNIA LEVEL



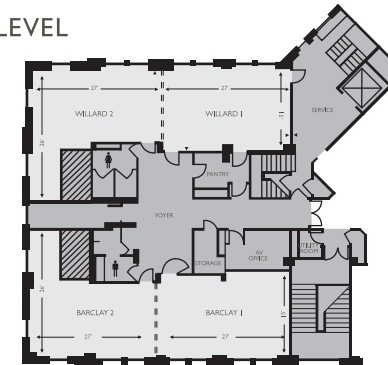
MEZZANINE LEVEL



LOBBY LEVEL



SECOND LEVEL



Name of Room	Theater Style	Classroom	Cocktail Reception	Banquet	U-Shape	Conference	Size (sq. ft.)	Length x Width (ft.)	Height (ft.)	Floor
Pine	25	15	25	20	—	12	361	19 x 19	7.6	C
Executive Board Room	—	—	—	—	—	10	338	13 x 26	7.6	C
Taylor	30	20	30	30	20	22	336	28 x 12	7.6	C
Mason	20	15	30	20	12	12	440	22 x 20	7.6	C
California	96	60	120	80	32	32	936	26 x 36	8	C
Powell	35	30	30	40	—	24	396	36 x 11	8	C
California & Powell	120	80	140	120	32	32	1,368	38 x 36	8	C
Peacock Court	500	272	800	470	65	—	4,400	100 x 44	20	L
Room of the Dons	200	144	300	220	44	—	2,128	56 x 38	20	L
Peacock Court & ROD	—	—	1200	670	—	—	6,528	156 x 38	20	L
Florentine	30	20	30	30	—	20	378	27 x 14	10.5	L
Garden	30	20	30	30	—	20	378	27 x 14	10.5	L
Florentine & Garden	55	40	60	60	—	30	756	54 x 14	10.5	L
Lobby Terrace	—	—	—	—	—	—	1,500	52 x 25	19	L

HOTEL FACILITIES

Historic charm combined with modern technology provides the starting point for a meeting experience unlike any other. Offering 380 rooms including 32 suites, all rooms face outward, boasting spectacular views of the city or bay. The hotel's five specialty suites are reminiscent of a fine home or estate, with each furnished in a unique style, filled with luxury appointments and original art representing the city's diverse cultural heritage.

The InterContinental Mark Hopkins San Francisco is home to the legendary Top of the Mark sky-lounge, famed for its panoramic vistas, the 100 Martini's menu, and some of the best live entertainment the Bay Area has to offer. Steeped in rich history, the lounge has continued to draw locals and visitors alike since its opening in 1939.

Guests also have access to in-room dining, a 24-hour fitness center, and business center.

MEETINGS AND EVENTS

The InterContinental Mark Hopkins San Francisco offers over 19,000 square feet of flexible, dynamic meeting and event spaces, of which 93% of the meeting rooms offer natural lighting. The historic Peacock Court Ballroom and the world-renowned murals in the Room of the Dons set the backdrop for a day of learning, an evening of dining or endless other opportunities.

A PERSONAL RESPONSIVE SERVICE

InterContinental Meetings are delivered by a highly-trained team focused on understanding your needs and staging an event that is tailored to you. Every element of our service and technology is designed to simplify the event planning process, from fast availability checks and transparent pricing to the latest technology tools such as virtual tours and fully interactive floorplans that can be customized to each event.

INSIDER COLLECTION

Our Insider Collection allows you to benefit from our hotel's unrivaled local knowledge. Often inspired by the destination itself, these experiences can be tailored to any event or meeting, ensuring that it delivers results and creates an experience to remember.

INSIDER LOCATIONS

Insider Locations give you an opportunity to base some of your event away from the hotel. We offer exclusive access to a variety of venues and experiences, allowing delegates to experience a side of the destination that visitors rarely see.

INSIDER SPEAKERS

A well-chosen speaker can bring your event to life and really inspire your delegates. Insider Speakers range from celebrities and cultural experts to sporting heroes, and all have a local connection.

INSIDER COMMUNITY

Insider Community events allow delegates to make a positive difference to the community they are visiting. It could be anything from painting a mural at a local school to preparing lunch in a homeless shelter.

INSIDER INTERACTIONS

We offer a range of team-building experiences which can be based on-site or in the local area. They are an original way to engage and motivate delegates while giving them a chance to interact with their destination.

INSIDER BREAKS

With Insider Breaks, a few minutes out of a busy day can become a whole experience in itself. It could be a talk from the concierge on local sights or a live cooking station hosted by the chef and showcasing local recipes.

CALIFORNIA LEVEL

