

Hotel Viata™

AUSTIN

FIRST FLOOR PLAN & CAPACITY



FUNCTION ROOM	SIZE (SQ. FT.)	DIMENSIONS	CEILING								
				BANQUET	CONFERENCE	THEATER	CLASSROOM	U-SHAPE	RECEPTION	HOLLOW SQUARE	EXISTING SETUP
CYPRESS BALLROOM	3,540	72' x 51'	13' x 15'	230	60	300	180	72	300	54	-
WILLOW (PRE-FUNCTION)	812	29' x 26'	13'	40	12	-	-	-	50	18	-
MAGNOLIA	800	25' x 32'	13'	50	24	50	36	27	50	30	-
COURTYARD	3,600	63' x 57'	-	200	-	150	-	-	300	-	-
VERANDA	1,000	66' x 13'	-	50	-	-	-	-	65	-	-
JUNIPER	1,400	42' x 33'	10'	80	24	110	84	33	100	42	-
OLIVE	376	20' x 20'	10'	30	12	40	14	14	30	18	-
REDBUD	733	38' x 22'	10'	50	28	70	36	24	50	36	-
LAUREL RESTAURANT	1,200	39' x 32'	13'	50	-	-	-	-	-	-	45
LAUREL BAR	714	15' x 14'	13'	-	-	-	-	-	50	-	38
LAUREL TERRACE	2,340	-	-	80	-	-	-	-	115	-	-
LAUREL TERRACE 1	1,320	55' x 24'	-	55	30-40	-	-	-	65	-	-
LAUREL TERRACE 2	1,020	60' x 17'	-	25	24	-	-	-	40	-	-
PRIVATE DINING ROOM	300	20' x 15'	13'	-	-	-	-	-	-	-	12

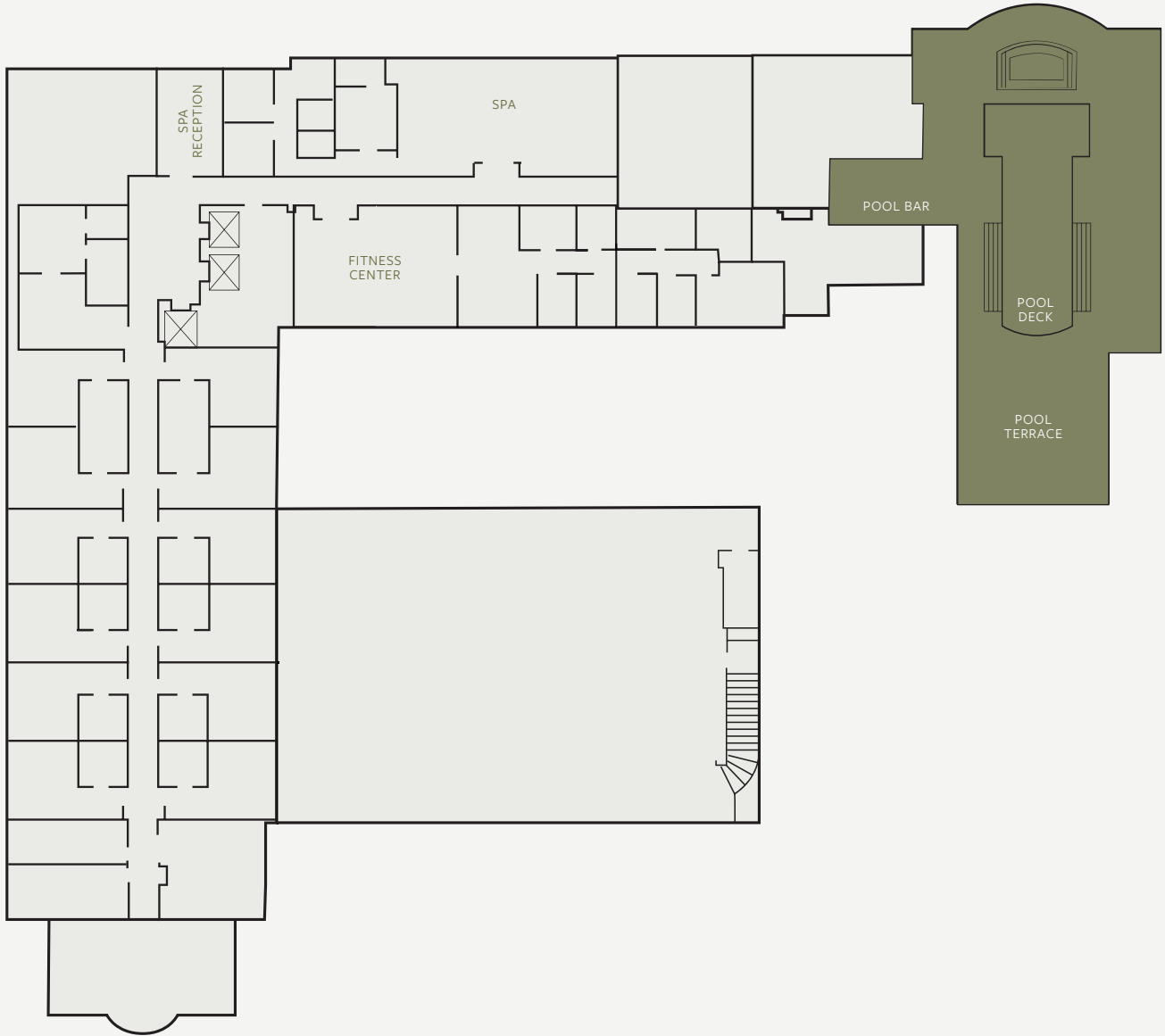
Book your special occasion with us today.

320 S Capital of Texas Highway West Lake Hills, Texas 78746 T 512 306 6400

Hotel Viata™

AUSTIN

SECOND FLOOR PLAN & CAPACITY



FUNCTION ROOM	SIZE (SQ. FT.)	DIMENSIONS	CEILING	BANQUET	CONFERENCE	THEATER	CLASSROOM	U-SHAPE	RECEPTION	HOLLOW SQUARE	EXISTING SETUP
POOL DECK	3,192	57' x 56'		100		150			200		
POOL BAR	630	21' x 30'	10'	20					35		19
POOL TERRACE	1,656	36' x 46'		40					50		

Book your special occasion with us today.

320 S Capital of Texas Highway West Lake Hills, Texas 78746 T 512 306 6400