

**AMAZING BRUNCH HACKS** p. 80

# Sunset

**CHOMP!**  
Cookies to wow any crowd  
page 73

## YOUR BEST YEAR EVER!

**63 joyful ways to win the season**

**WINTER WEAR SPIRIT**  
Feel the natural beauty  
p. 27

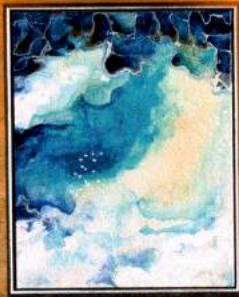
**CUTE CLUB**  
5 fix...  
pare... 52

VISIT US AT [SUNSETMAG.COM](#) | DECEMBER 2018/JANUARY 2019



**FAMILY GETAWAYS**  
*Washington's Alpine Lakes Wilderness Area*





COASTAL  
GETAWAY

## The glow is on

Sonoma County does a lot of things right—wine, country roads, creamy cheese, and romantic stays that come with incredible views. One of our favorites is Bodega Bay Lodge (sister property to the Harvest Inn in Napa Valley). Perched on Sonoma's craggy coast, the recently renovated resort unveiled a new bar with several firepits made for watching the sun dip below the marine layer. Slurp up oysters farmed just down the road, sip a craft cocktail, and, when it gets too cold out, head inside to the nautical-themed lounge to catch the same views but from one of the jewel-toned banquettes. *From \$289; bodegabaylodge.com.*

BODEGA BAY LODGE: PAUL DYER (3); CHEESE KNIFE: COURTESY WENDY SCOFIELD



FOODIE  
FIND

## TIME-CAPSULE TREAT

What our L.A. friends will be getting from us this year: the West Coast version of Proust's madeleine, inspired by an iconic San Francisco bakery. *Blum's Coffee Crunch Cake*, from \$40; [valerieconfections.com](http://valerieconfections.com) (only available for pick up from bakery or L.A. delivery).

KITCHEN  
TOOL

## A CUT ABOVE

For the consummate entertainer who curates every detail of a cheese board. *Porcelain cheese knife*, \$20; [field finding.com](http://fieldfinding.com). 