



**DOLCE**  
HOTELS AND RESORTS<sup>®</sup>  
CHANTILLY

meeting spaces that *inspire*

# dolce chantilly

**In the historic Chantilly Forest, just 40 minutes from Paris and 25 minutes from Roissy CDG airport, Dolce Chantilly creates one of the most idyllic countryside settings imaginable.**

From sights, flavours and experiences that reward all the senses to comprehensive meeting and event facilities (2000 m<sup>2</sup> – 22,000 sq. ft.) featuring an array of sophisticated technology, a gym, two swimming pools and a private 18-hole golf course by UGOLF, Dolce Chantilly reflects fine French hospitality that nourishes the mind, body and spirit.



## conference facilities

**A work of modern architecture and cutting-edge technology,** Dolce Chantilly's Conference Centre is comprised of more than 2,000 m<sup>2</sup> (22,000 sq. ft.) of dedicated convention space, with 22 meeting rooms organized around an Atrium. The 9 main conference rooms accommodating up to 300 people and the 13 breakout rooms all feature abundant natural lighting, ergonomic seating, individual temperature control and free unlimited wi-fi. An onsite dedicated conference planner, a fully staffed business centre team and audiovisual technicians will customize and oversee your event down to the last detail.





# accommodation

Awaken to views of the golf course or the forest from the 200 guest rooms and suites, all non-smoking, some with their own terraces that integrate the year-round beauty of the surroundings into the interiors. Dolce Chantilly mingles tasteful and comfortable furnishings reminiscent of an elegant country retreat with today's most modern conveniences, including free wireless high speed Internet access, cable TV, generously sized work areas and more, to offer an ideal balance of efficiency and relaxation.



# corporate events & banquets

With such a spectacular selection of venues, both indoor and outdoor, Dolce Chantilly is the perfect choice for private dinners, cocktail parties, corporate receptions or any special occasion. Nestled between the pool and the forest, the Par en Par Lounge and terrace offer an ideal setting for gatherings between 60 and 180 people. The Atrium or the Chantilly banqueting room provides a perfect complement, accommodating groups up to 250 guests. With customized menus, event planners and special arrangements easily made, the possibilities to create a truly personalized experience are unlimited.



# dining experience

For any culinary preference or time of day, Dolce Chantilly answers the call with superior French cuisine. Capturing the tastes and specialties of the region, the elegant La Véranda Restaurant seats up to 280 people for delectable dinners and elaborate buffet breakfasts. La Véranda is an authentic winter garden bathed in light, which opens onto the golf course for outdoor entertaining possibilities. The Donatello Restaurant is a particularly popular choice among guests for its Bistro Chic cuisine: when the bistro meets French gastronomy to offer fine, authentic and generous dining suited to all budgets. The Chef highlights seasonal products without denaturing or deconstructing them. Those seeking a more relaxed ambience enjoy The Swing, the Club House bar restaurant, with its friendly, cosy setting and casual fare. At the end of the day, cocktails await at the Donatello Bar, the perfect way to unwind after a day of work or recreation.





## sports & recreation

The magnificent setting of Dolce Chantilly invites an incredible array of opportunities for reconnecting to the mind and body, whether it's a swim in one of the two indoor and outdoor pools, a workout in the gym, or a visit to the sauna and steam room. Perfect for teambuilding activities, games of beach volleyball, tennis, mountain biking excursions and other activities await your enjoyment. Golfers would not want to miss our own 18-holes, par-72 course by UGOLF and designed with water features, reed beds and pockets of forest, as well as the convenience of an inland links design that allows for year-round, dry-feet play. Four other prestigious courses are nearby to add extra variety.



## the neighbourhood

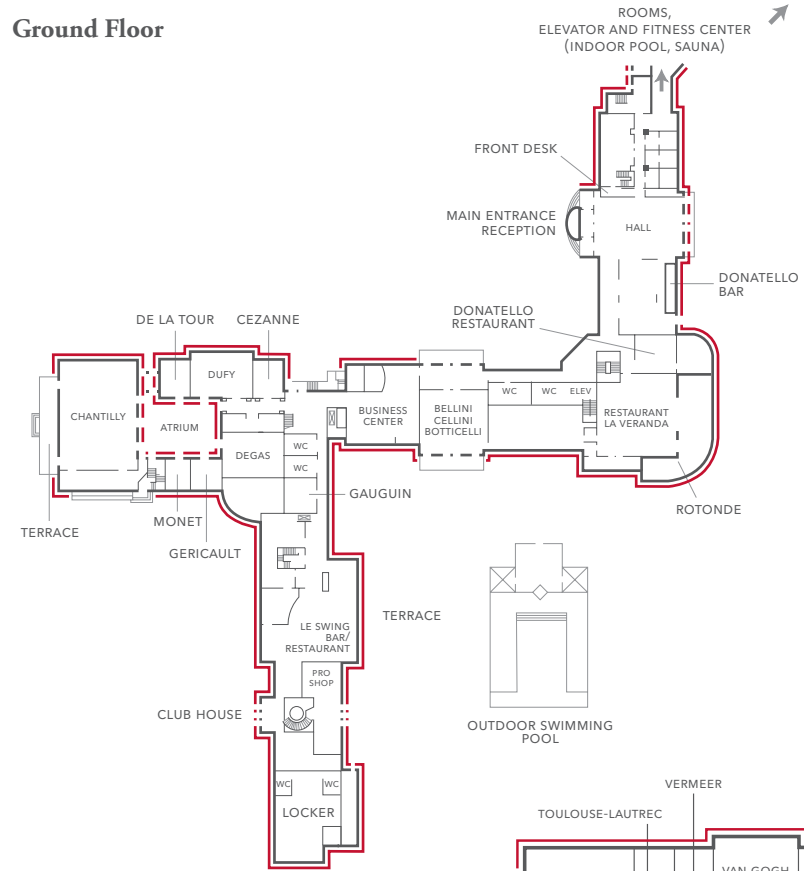
Enjoy the fresh air of the 6,300-hectare (15,568 acre) Chantilly forest. Discover the Château de Chantilly, home to one of the finest 17th and 18th century art collections outside of the Louvre Museum. Wander the cobbled streets of the Royal town of Senlis, with its medieval walls and historical monuments. Visit the Chantilly Polo Club, the largest polo school in France, or admire the Horse Museum, housed in one of the most beautiful stables in the world. With Paris so close by, take a dinner cruise on the Seine and marvel at the beauty of the “City of Lights,” a stunning city at the heart of a stunning region.



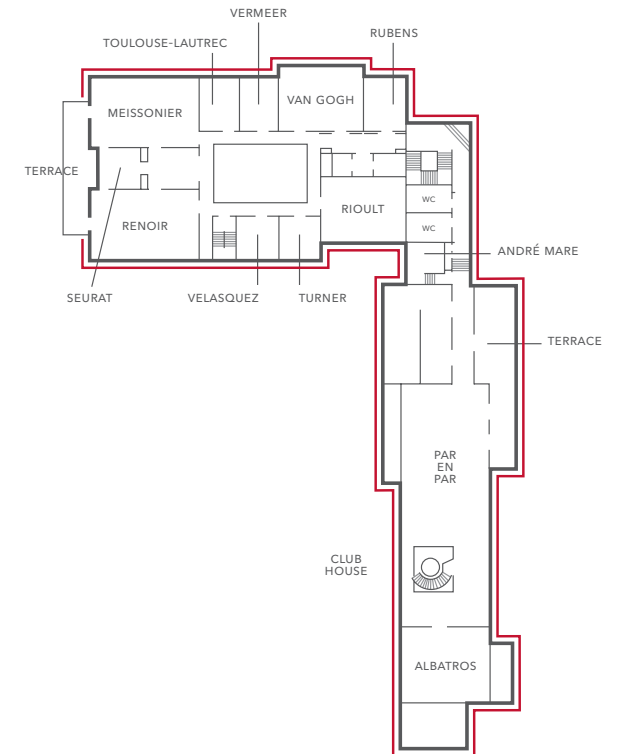
# floor plans



## Ground Floor



## 1st Floor



**DOLCE**  
HOTELS AND RESORTS®  
CHANTILLY

**Map & directions**



Dolce Chantilly is located 40 minutes from Paris and only 25 minutes from Paris Roissy Charles de Gaulle International Airport. For more detailed directions, please visit our website at [dolcechantilly.com](http://dolcechantilly.com)

ROUTE D'APREMONT, VINEUIL SAINT FIRMIN · 60500 CHANTILLY, FRANCE  
T. +33 (0)3 44 58 37 02 · F. +33 (0)3 44 58 50 11 · [DOLCECHANTILLY.COM](http://DOLCECHANTILLY.COM)