

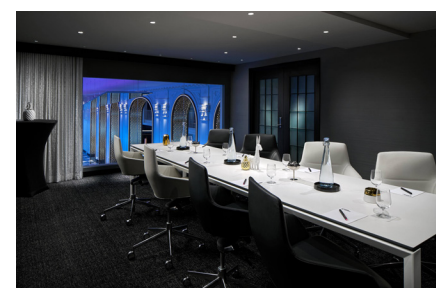


HOTEL WASHINGTON

Luxe amenities and unparalleled sophistication come to life at Hotel Washington. Following a thoughtful renovation completed in 2019, it is now a beacon of modern luxury where old and new blend seamlessly. Toast to skyline views at the iconic rooftop lounge, VUE; grab a signature cocktail and dish at the Lobby Bar lounge; and explore the city's top attractions — just outside our doors.

MEETINGS AND EVENTS

Expert event professionals are here to handle your next meeting or event. Offering natural lighting, world-class amenities, integrated AV systems, and professional catering, our meeting and event space span over 12,000 square feet of space with seven state-of-the-art meeting rooms and conference spaces. Reach new levels of productivity in our adaptable spaces designed to delight all attendees. Foster powerful connections in our rooftop Sky Room or rooftop terrace, VUE, overlooking the White House and National Mall. Soak in the grandeur and majesty of our 6,000 square foot Grand Ballroom, or the intimacy of our board rooms, Focus and Assembly. Whether a small working session or a large conference, an event for work or play, we are here to be the backdrop of your vision.



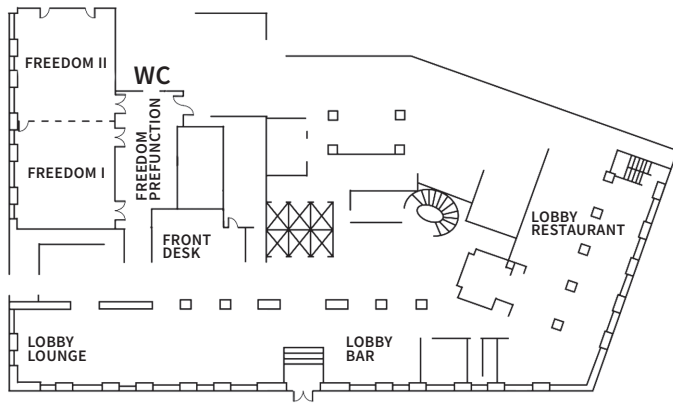
Hotel Washington

515 15th St NW
Washington, DC 20004
United States

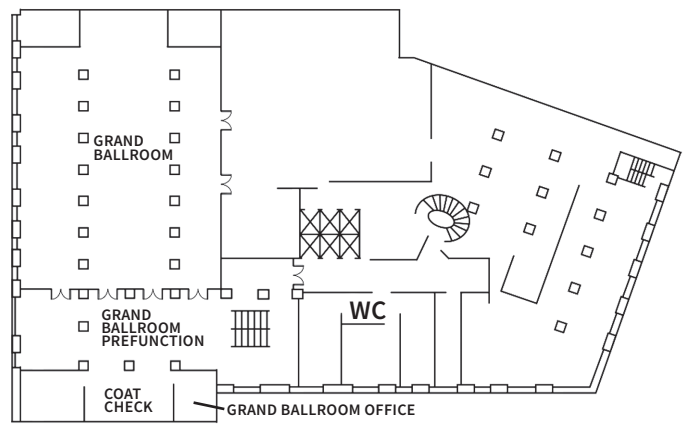
thehotelwashington.com
(202) 661-2400

©2021 Hotel Washington. All Rights Reserved.

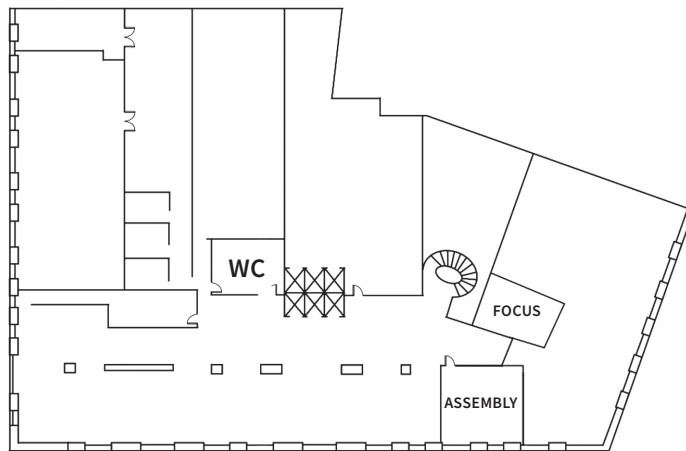
Lobby Level



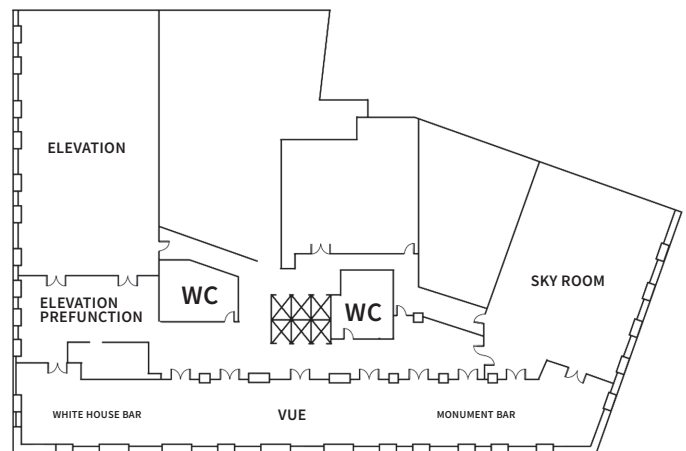
Lower Level



Mezzanine Level



Roof Level



Room Name	Dim. (l x w)	Area sq. ft.	Height	Banq.	Thtr.	Conf.	Rec.	Class	U-Shape	H-Sq.	Dinner Dance
Grand Ballroom	99' x 69'	6,205	15'6"	240	300	50	600	200	50	55	220
Grand Ballroom Prefunction	51' x 89'	2,149	12'6"	----	----	----	240	----	----	----	----
Freedom	59' x 32'	1,888	18'	120	230	48	225	120	50	60	120
Freedom I	30' x 32'	935	18'	50	100	24	75	60	30	40	40
Freedom II	29' x 34'	986	18'	50	100	24	75	60	30	40	40
Freedom Prefunction	46' x 21'	768	9'5"	----	----	----	80	----	----	----	----
Assembly	15' x 29'	440	7'5"	----	----	8	----	----	----	----	----
Elevation	68' x 35'	2,336	15'	180	230	48	250	150	54	60	150
Elevation Prefunction	22' x 36'	595	11'	----	----	----	----	----	----	----	----
Sky Room	27' x 47'	1,925	13'	----	----	----	100	----	----	----	----
VUE	18' x 154'	2,907	8'4" - 14'	----	----	----	200	----	----	----	----
Focus	15'8" x 15'8"	248	7'2"	----	----	8	----	----	----	----	----
Presidential Suite	----	1,150	----	----	----	----	20	----	----	----	----

SURROUNDING AIRPORTS

Ronald Reagan Washington National Airport: 4.4 miles / 11 minute drive

Dulles International Airport: 26 miles / 32 minute drive

Baltimore-Washington International Airport: 31 miles / 76 minute drive

NEARBY ATTRACTIONS

The White House: .3 miles / 6 minute walk

Metro Center: .3 miles / 6 minute walk

Constitution Ave, Start of The National Mall: .4 miles / 9 minute walk

CityCenterDC: .5 miles / 12 minute walk

Washington Monument: .6 miles / 12 minute walk

Lincoln Memorial: 1.3 miles / 5 minute drive

Georgetown: 1.6 miles / 11 minute drive

United States Capitol: 1.7 miles / 9 minute drive

Tidal Basin: 1.7 miles / 9 minute drive

Union Station: 2 miles / 10 minute drive

